

CHASSIS

**A**

# GLG 210 MP

Very powerful  
small all adaptable glass  
handler lifting up to  
210 kg/563 lbs.



Foam filled  
no flat tires

- Intelligent all adaptable glass handler for millimeter precise maneuverability of flat materials
- No Outriggers - less floor space required
- Drives through narrow passages down to 62,5 cm/25"

### 400% overcapacity



The most secure vacuum system with two separate 200% systems.

### All-hydraulic



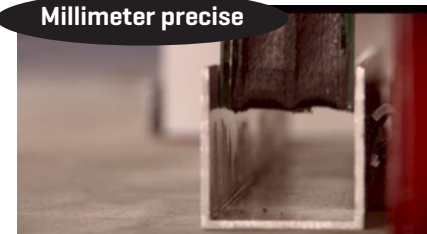
All moving parts are controlled by the powerful and extremely precise hydraulic system.

### Choose 1 or 2 batteries



The powerful battery solution ensures optimal autonomy and recharges over night.

### Millimeter precise



The GLG all adaptable handlers are the most precise lifters in the world when combined with the extremely heavy loads.

**SERVICE**  
**24 HOUR**  
DELIVERY OF SPARE PARTS



We lift it up where it belongs!

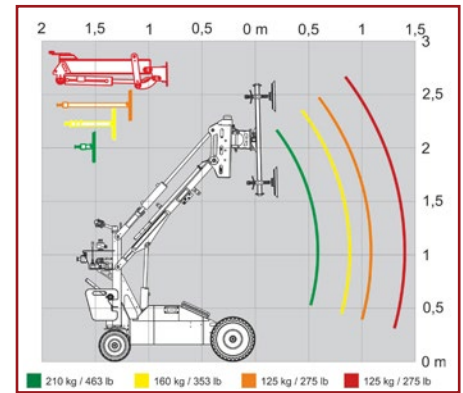
[www.glgsales.com](http://www.glgsales.com)



## Technical specifications

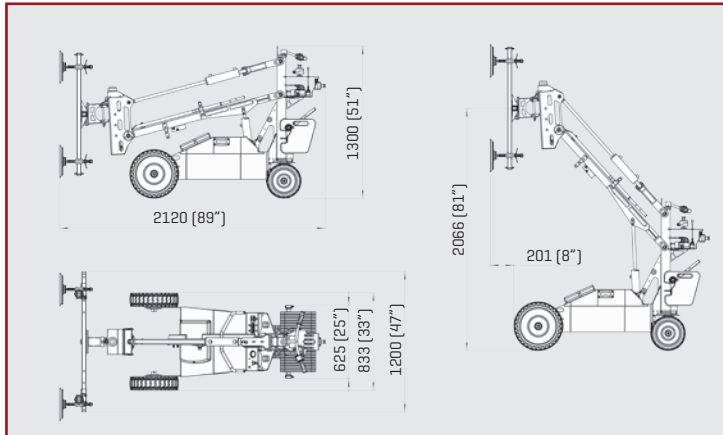
Description	EU	US	Description	EU	US
Loading capacity w. 12 counterw.	210 kg	563 lb	Width min	625 mm	25"
Own weight w. counterw.	478 kg	1054 lb	Width max	833 mm	33"
Own weight without counterw.	352 kg	776 lb	Width twin wheels	1083 mm	43"
Axle load rear	170,50 kg	376 lb	Width boom	1200 mm	47"
Axle load front	181,50 kg	400 lb	Length min.	2.000 mm	79"
Pressure rear wheels	3,03 kg / cm <sup>2</sup>	43 lb/in <sup>2</sup>	Sideshift	70 mm	3"
Pressure front wheels	2,88 kg/cm <sup>2</sup>	41 lb/in <sup>2</sup>	Vertical shift	150 mm	6"
Pressure front wheels twin mount	1,44 kg/cm <sup>2</sup>	20,5 lb/in <sup>2</sup>	Charging current	115 V/230 V	
Max lifting height	2.063 mm	81"	Battery [std.]	12 V / 159AH	
Height min	1.300 mm	51"	Autonomy	9 hours	
			Loading time 30% to 100%	App. 9 hours	

## Lifting diagramme

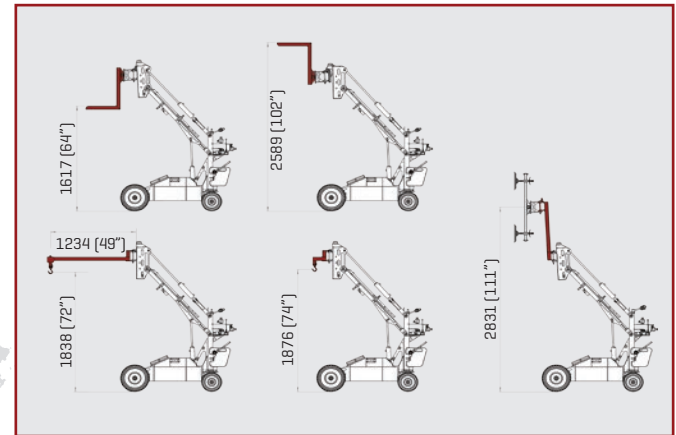


Lifting data with the different extension arms and with the front lift arm.

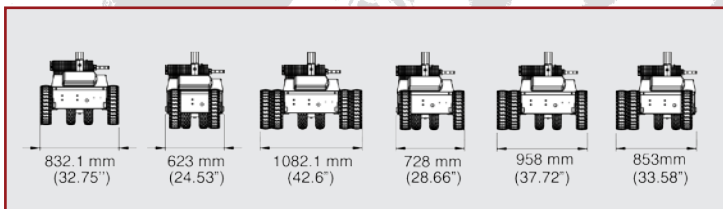
## Measurements



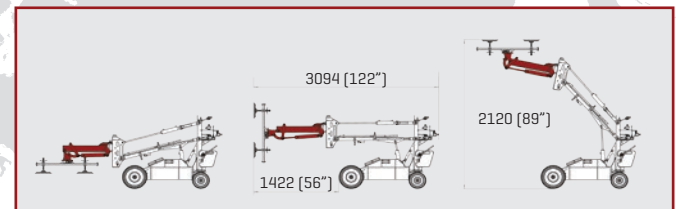
## Accessories



## Front wheel set-up's



## Horizontal lifting arm



Specifications Our machines comply with the requirements of Machinery Directive 2006/42/EC, and are ASME B30.5, 5-1.1, 5-1.10 Compliant, ASME B30.20 Compliant, SAE-J1063 Compliant, and SAE-J765 Compliant.

Other standards met include:  
 DS/EN ISO 12100:2011 Safety of machinery – General principles for design  
 DS/EN ISO 4413:2010 Hydraulic fluid power  
 DS/EN 13155 + A2:2009 Cranes – Safety – Non-fixed load lifting attachment.

Much more information at [www.glgsales.com](http://www.glgsales.com)

**GLG Canada Ltd (North America)**  
 21332 Wilson Street, NOL 1E0  
 Delaware, Ontario, Canada  
 Phone: 1-855-779-3371

**European Head Office**  
 Soendergaarden 28  
 9640 Farsoe, Denmark  
 Phone: +45 75 72 72 15

[www.glgsales.com](http://www.glgsales.com)

