

SENEBOGEN

PRELIMINARY



186 kW



125 t



MAX CAB

3300E

Crawler crane

TIER IVf emission standards

3300E Advanced. The E-Series.



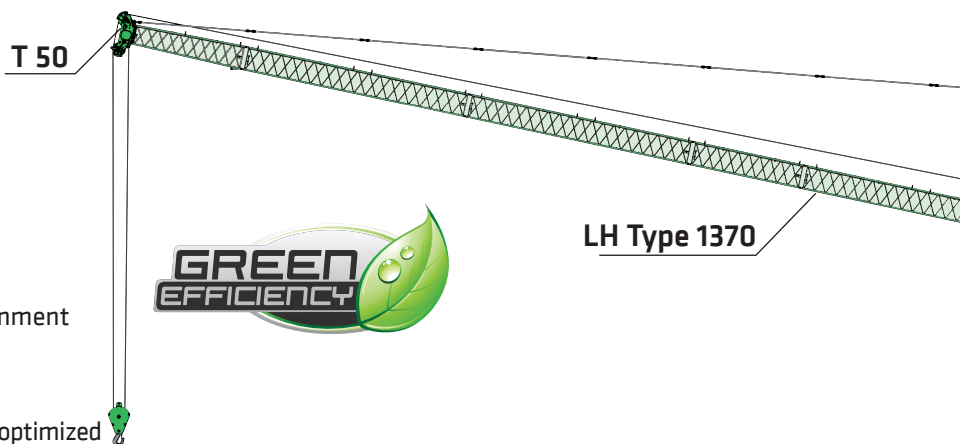
1972: rope-driven SK 15 with plastic operator cab

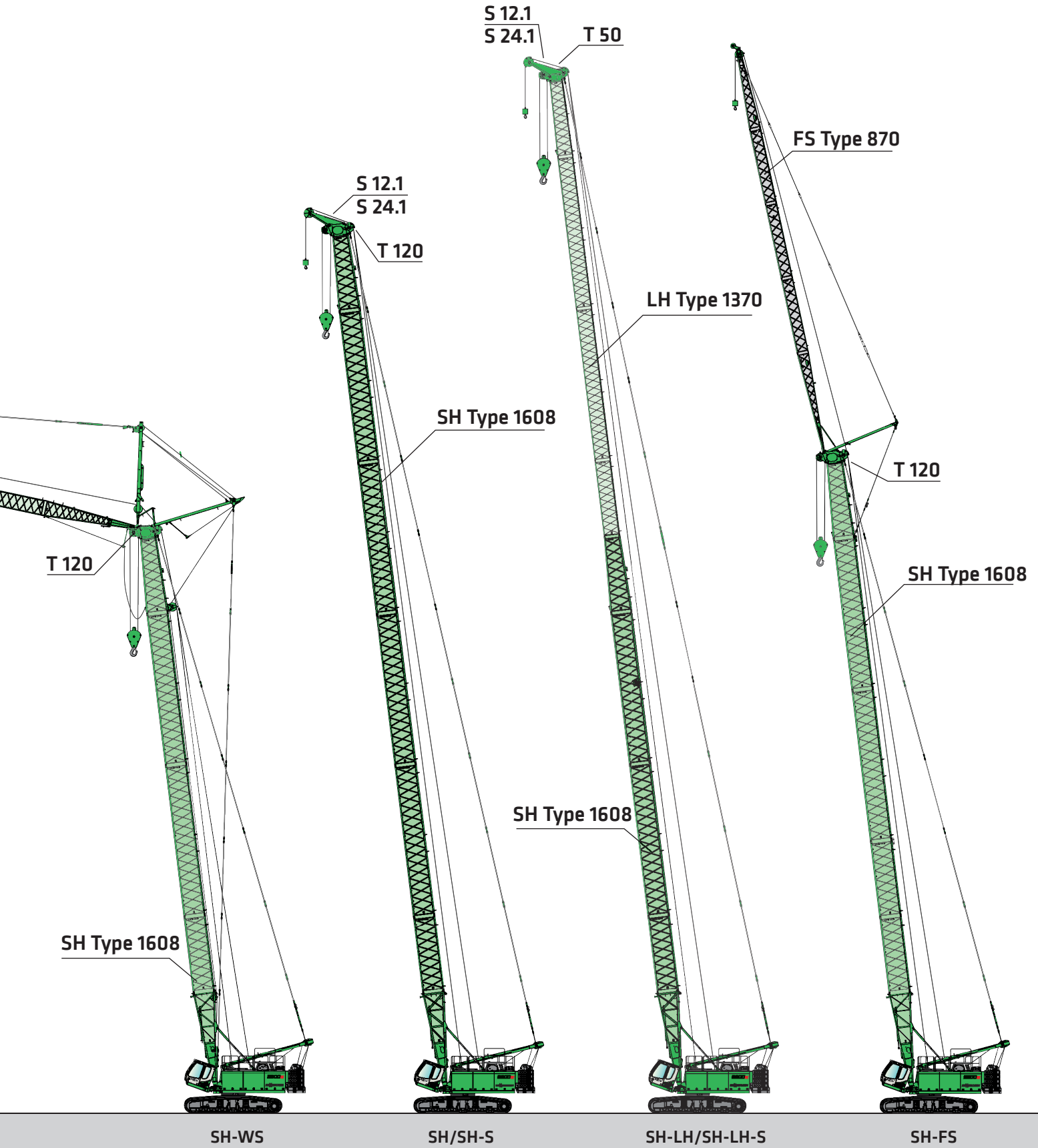
What makes up the E-Series

- 60 years of experience in the design and construction of duty cycle cranes
- Uncompromisingly high performance in all areas
- Technology that can be mastered: high-quality components without over-engineering
- Long product service life and high value retention

Your top benefits:

- 1 Green Efficiency**
Save fuel – reduce operating costs
Work quietly – protect operator and environment
- 2 Peak performance**
Durable mechanical systems – stressed parts optimized
High speeds – high load capacities
- 3 Maximum operating comfort**
Comfortable Maxcab operator cab – relaxed work
SENCON – SENNEBOGEN Control System
- 4 Flexibility in action**
Traveling under load – compact
Strong undercarriage traction – good all-terrain mobility
- 5 Easy transport**
Star-Lifter undercarriage – ready for use in minutes
Ballast stacking stem – short set-up time
- 6 Maintenance and service made easy**
Easy fault diagnosis – central reading points
Easy maintenance – clear labeling
- 7 Consultation and support**
3 production sites – 2 subsidiaries
120 sales partners – over 300 service stations





3300E Technical data, equipment

MACHINE TYPE

Model (type) **3300**

ENGINE

Model	Cat C7.1; Stage IIIa 186 kW/253 hp at 1,850 rpm Cat C7.1; Stage IVf 186 kW/253 hp at 1,850 rpm Direct-injection, turbo-charged, charged air cooler, reduced emissions
Cooling	Water-cooled
Diesel filter	With water separator
Air filter	Dry filter with pre-separator, automatic dust discharge, main element and safety element, contamination indicator
Fuel tank	max. 815 l/785 l (center of sight glass)
AdBlue tank	33 l
Electrical system	24 V
Electrical installation	Easy and clearly arranged
Batteries	2 x 150 Ah , main switch
Options	<ul style="list-style-type: none"> ■ Low-temperature package with engine pre-heating and heated diesel filter for temperatures below -20 °C ■ Electric fuel pump

UPPERCARRIAGE

Design	Torsion-resistant box design, precision crafted, bronze bushings for boom brackets, clear and service-friendly design, longitudinal engine
Electrical system	Central electrical distributor, battery disconnect switch
Lighting	LED headlights for optimal illumination of the work area
Safety	<ul style="list-style-type: none"> ■ Camera monitoring of rear and right side
Options	<ul style="list-style-type: none"> ■ Maritime climate varnish as corrosion protection ■ Low temperature package ■ Ballast support fixture ■ Pinion gear lubrication for outer slewing ring ■ Automatic central lubrication system for equipment and slewing ring ■ Additional cameras upon request ■ Right and left uppercarriage railings

HYDRAULIC SYSTEM

Multi-circuit hydraulic system for optimal function and capacity, all movements can be run simultaneously.	
Pump type	The hydraulic pumps are variable displacement piston pumps with individual control and energy-saving flow-on-demand control.
Pump control	The pumps only supply as much oil as is actually consumed. Pressure cut-off, load limit sensing control
Operating pressure	max. 330 bar
Filtration	High-performance filtration with long-term change interval, contamination indicator SENNEBOGEN HydroClean micro-filter system with water separator option
Hydraulic tank	max. 750 l/575 l (center of sight glass)
Control system	Proportional, precision hydraulic servo control of the movements, 2 servo joysticks for work functions, supplemental functions via switches and foot pedals – arranged clearly and ergonomically. High energy efficiency thanks to oversized hydraulic valves and lines. Measurement connections in the hydraulic circuits
Safety	Hydraulic circuits with safety valves
Options	<ul style="list-style-type: none"> ■ Bio-oil – environmentally friendly ■ SENNEBOGEN HydroClean micro-filter system with water separator

SLEWING DRIVE

Gearbox	Compact planetary gear with slant-axis hydraulic motor, integrated brake valves
Slewing gear brake	Spring-loaded multi-disk brake
Slewing ring	Ball bearing rotary connection with exterior gearing
Slewing speed	0-2,5 rpm , 3 adjustable rotation speeds
Options	<ul style="list-style-type: none"> ■ Precision slewing gear brake

3300E Technical data, equipment

CAB MAX CAB

Cab type	Maxcab
Cab equipment	SENNEBOGEN Maxcab – Cab with sliding doors, vibration-resistant, spacious operator area, with excellent soundproofing, spacious cab with outstanding panorama view and new, ergonomic control panels, approx. 0.8 m outward extension and approx. 20° hydraulic rearward inclination, tinted safety glass, tiltable windshield, large sunroof, wiper and washer system for windshield and sunroof. Sunblind for sunroof. Automatic climate control system with central controls, fresh air and recirculated air switches with particle filter, defroster switch, adjustable air vents for optimal indoor temperature. Ergonomic comfort seat, multiple adjustment options, lumbar support, headrest, adjustable arm rests and seat belt. Sunroof made of VSG safety glass (8.76 mm)

- Options
- E270 cab with 270 cm hydraulic elevation and 20° tilt
 - Platform with railing next to cab
 - Auxiliary heating system with timer
 - Activated-carbon filter for cab
 - Sliding window in operator door
 - Vitrified, armored glass sunroof
 - Vitrified, armored glass windshield
 - Sunblind for windshield
 - Protective roof grating
 - FOPS protective roof grating for roof
 - Radio kit with antenna and speakers
 - Radio with CD player
 - SENtrack telemetry system

ATTACHMENTS

Design	Decades of experience and the latest computer simulations guarantee maximum stability and service life.
Boom adjustment winch	Bent-axis hydraulic motor drive with compact planetary gearbox and 110 kN tensile force, 20 mm rope diameter.
Safety brake	Spring-loaded disk brake
Crane safety	Latest generation of load moment monitoring, display shows all important data, lifting limit switch, pressure relief valves, cable exit protection
Boom	SH boom length up to 69.1 m

- Options
- Max. boom length on SHLH version: 74.7 m
 - Max. boom length on SHWS version: 41.1 m + 52.3 m
 - Auxiliary jib, for safe working loads to 12 t
 - Auxiliary jib, for safe working loads to 24 t
 - Fixed fly to 29.9 m

UNDERCARRIAGE

Design	Powerful Star-Lifter wide-track crawler with integrated protected drive transmission
Travel drive	Powerful travel drive with axial piston hydraulic motor, directly mounted automatic brake valve and compact planetary gearbox on each crawler
Parking brake	Spring-loaded multi-disk brake
Traveling gear	Maintenance-free tractor running gear with hydraulic track tension, 900 mm 3-grouser track shoes
Travel speed	0-1.3 kph
Options	■ 900-mm flat crawler shoes

WINCH

The winches are driven by high-pressure-regulated adjustable hydraulic motors for consistently optimal tensile force speed control. Hydraulic lowering brake valves for sensitive, wear-free braking. Powerful oil bath planetary gearbox, low-maintenance.

Holding brakes are spring-loaded, maintenance-free, low-wear oil bath disk brakes, oil-cooled.

Main winch	12 t
Rope winch (rated load) 1st layer	160 kN
Rope diameter	26 mm
Rope speed 1st layer	105 m/min

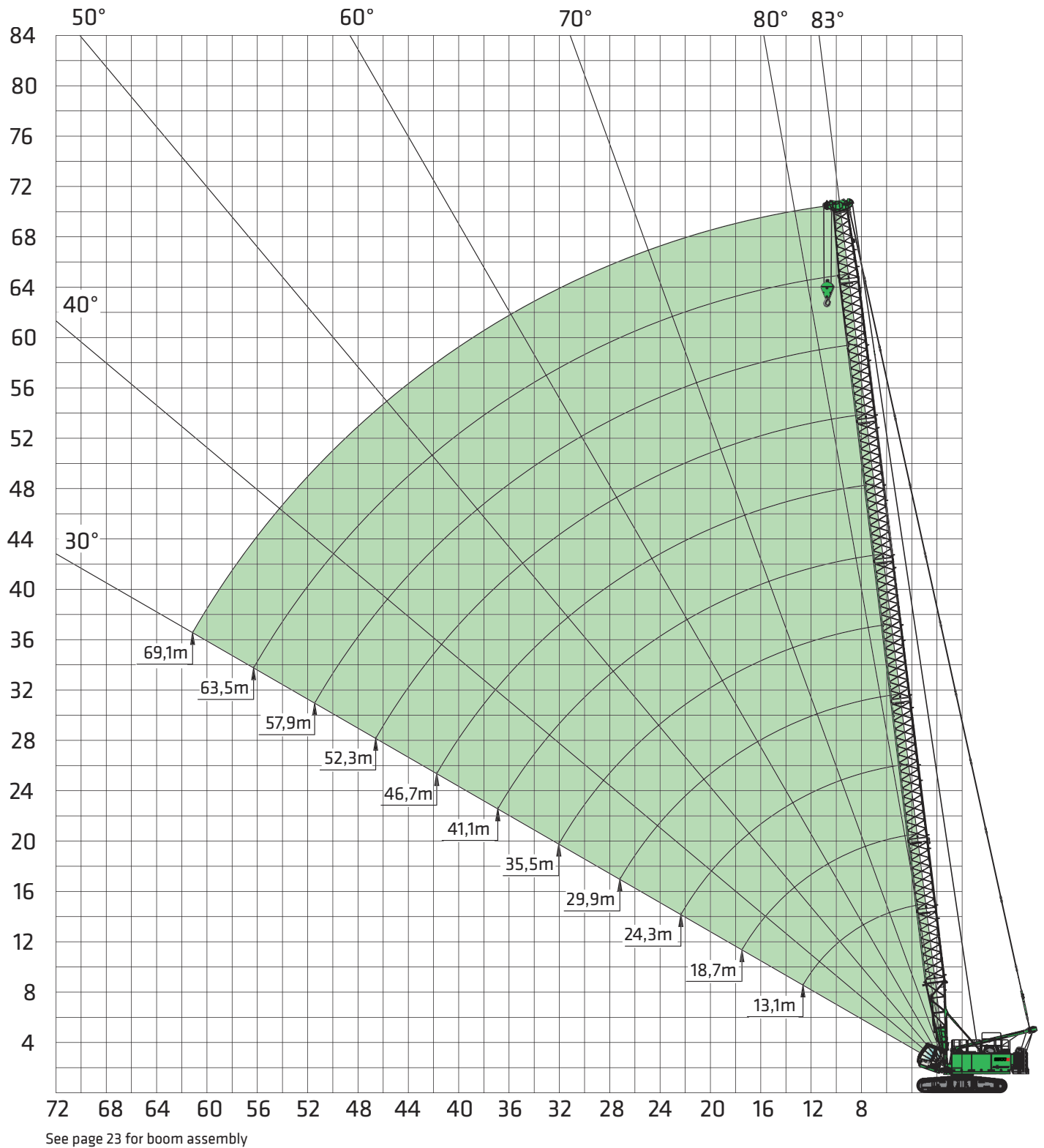
OPERATING WEIGHT

Mass	Approx. 110,000 kg 3300 Star-Lifter with 2 hoist winches, 18.7 m basic boom, 38 t counterweight, 900 mm 3-grouser track shoes, hoist rope and 80 t bottom hook block
Notice	Operating weight varies depending on the version and equipment.

3300E Crane equipment



69.1 m SH main boom



3300E Load ratings



69.1 m SH main boom

37.7 t 0 t Working radius [m]	Boom length [m]											
	13.1	18.7	24.3	29.9	35.5	41.1	46.7	52.3	57.9	63.5	69.1	
4.0	125.0*/110	106.0/4.6										
5.0	103.0	103.0	93.6/5.2	74.0/5.9								
6.0	85	84.9	80.3	73.2	59.5/6.6							
7.0	72.0	71.9	67.6	63.2	57.2	47.2/7.3						
8.0	58.3	58.2	58.0	54.9	51.6	44.9	38.0	30.4/8.7				
9.0	48.9	48.7	48.5	48.4	46.0	41.7	36.0	29.9	24.6/9.3			
10.0	42.0	41.8	41.5	41.3	41.2	38.6	33.9	28.6	24.0	19.3	15.6/10.7	
11.0	36.7	36.5	36.2	36.0	35.9	35.4	31.8	27.2	23.1	18.7	15.4	
12.0	32.5	32.3	32.0	31.8	31.7	31.5	29.8	25.9	22.2	18.1	15.0	
13.0	29.2	28.9	28.6	28.4	28.2	28.1	27.7	24.6	21.3	17.5	14.6	
14.0	28.8/13.1	26.1	25.8	25.6	25.4	25.2	24.9	23.3	20.4	16.9	14.2	
15.0		23.8	23.5	23.3	23.1	22.9	22.5	22.0	19.5	16.3	13.8	
16.0		21.8	21.5	21.3	21.1	20.9	20.5	20.3	18.6	15.7	13.3	
17.0		20.2	19.8	19.5	19.3	19.1	18.8	18.6	17.7	15.2	12.9	
18.0		18.7	18.3	18.0	17.8	17.6	17.2	17.1	16.7	14.6	12.5	
19.0			17.0	16.7	16.5	16.3	15.9	15.7	15.4	14.0	12.1	
20.0			15.9	15.6	15.3	15.1	14.7	14.6	14.2	13.4	11.6	
22.0			14.0	13.6	13.4	13.1	12.8	12.6	12.2	12.0	10.8	
24.0			13.3/22.8	12.0	11.8	11.5	11.1	10.9	10.6	10.4	10.0	
26.0				10.8	10.5	10.2	9.8	9.6	9.2	9.1	8.7	
28.0				9.9/27.7	9.3	9.1	8.7	8.5	8.1	7.9	7.6	
30.0					8.4	8.1	7.7	7.5	7.1	6.9	6.6	
32.0					7.6	7.3	6.9	6.7	6.3	6.1	5.7	
34.0					7.4/32.5	6.6	6.2	5.9	5.6	5.4	5.0	
36.0						6.0	5.6	5.3	4.9	4.7	4.4	
38.0						5.6/37.4	5.0	4.8	4.4	4.2	3.8	
40.0							4.5	4.3	3.9	3.7	3.3	
42.0							4.1	3.8	3.4	3.2	2.8	
44.0							4.1/42.2	3.4	3.0	2.8	2.4	
46.0								3.1	2.7	2.4	2.0	
48.0								2.9/47.1	2.3	2.1	1.7	
50.0									2.0	1.8	1.4	
52.0									1.8/51.9	1.5	1.1	
54.0										1.3	0.9	
56.0										1.1		
58.0	Table no. 3300R-75/2527/37.7/06.03. SH										1.0/56.8	
Number of strands	10	9	8	7	5	4	4	3	3	2	2	

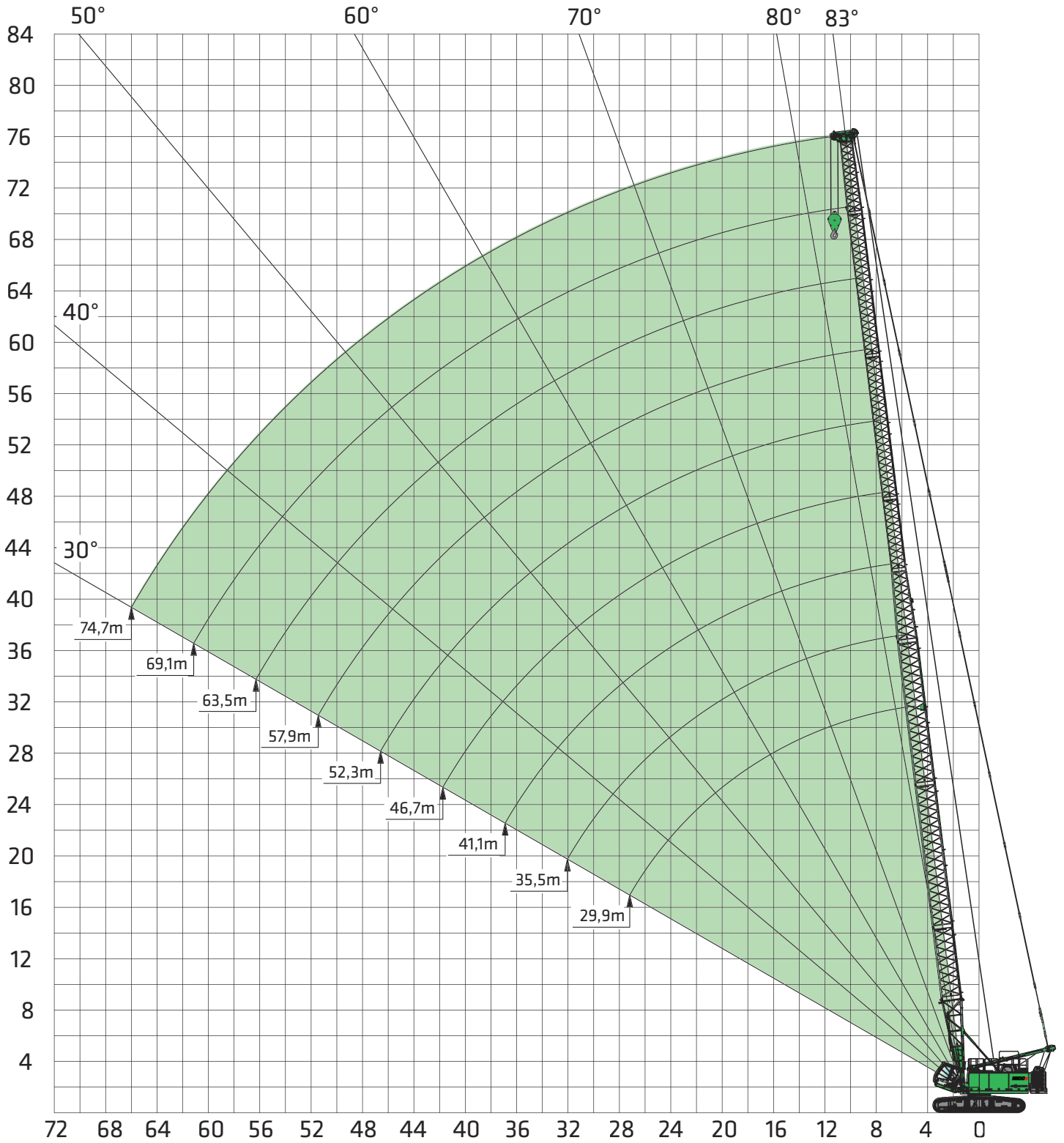
Comments:

- The specified safe working loads apply when the machine is level and on firm ground.
- Load ratings are in tons and apply for 360°.
- The safe working loads factor in the standards DIN 15019/2 and ISO 4305 (tiling angle 4°).
- Deduct the weight of the load handling devices (hook, suspension gear) from the safe working loads.
- The safe working loads apply for the maximum undercarriage track width.
- Load ratings must be limited or reduced when conditions are unfavorable, such as soft or uneven ground, slopes, wind, lateral loads, swinging loads, jerking or sudden stopping of load, operator inexperience, driving with load.
- Permissible rope winch per strand in crane mode for winch diameter 26 mm – 12,000 kg.
- Safe working loads apply for boom assembly in accordance with the operating manual.
- Safe working loads apply for optimal boom assembly and a pulley head with plastic pulleys.
- The specified load ratings are only for orientation. See the operating manual for valid safe working loads.
- Loads indicated with * apply only with special equipment or special boom attachment.

3300E Crane equipment



SHLH main boom



See page 23 for boom assembly

8 Subject to change. See page 7 for notes on load lift charts.

3300E Load ratings



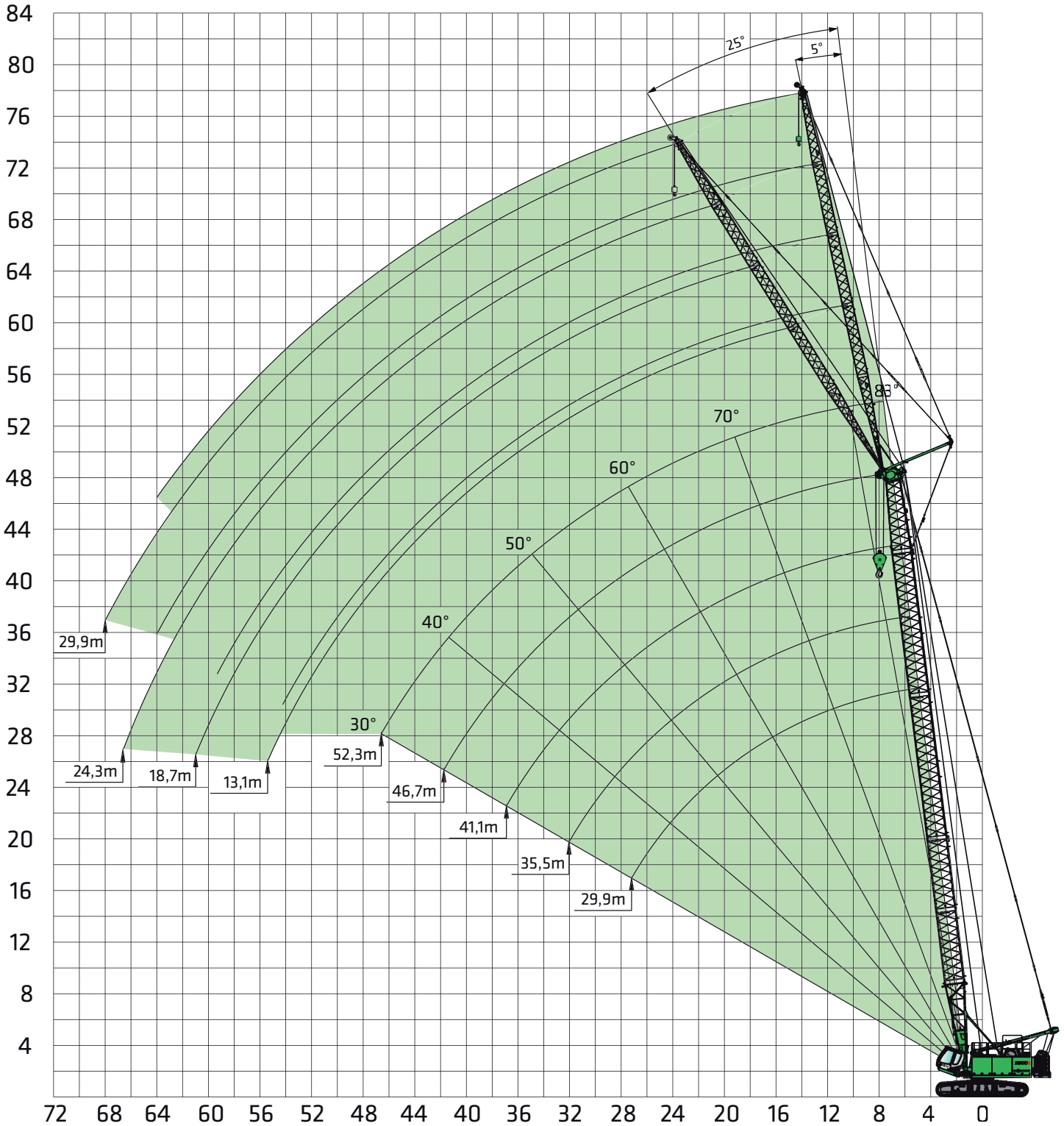
SHLH main boom

37.7 t 0 t Working radius [m]	Boom length [m]								
	29.9	35.5	41.1	46.7	52.3	57.9	63.5	69.1	74.7
4.0									
5.0	42.0/5.8								
6.0	41.6	39.0/6.5							
7.0	39.7	38.0	29.4/7.2	26.3/7.9					
8.0	37.7	36.3	28.5	26.1	19.0/8.5				
9.0	35.8	34.5	27.5	25.2	18.7	16.9/9.2	10.4/9.9		
10.0	33.9	32.7	26.5	24.4	18.3	16.6	10.4	8.9/10.6	
11.0	31.9	30.9	25.4	23.5	17.8	16.2	10.2	8.7	6.9/11.3
12.0	30.0	29.1	24.4	22.6	17.3	15.7	10.0	8.5	6.7
13.0	28.1	27.3	23.8	21.7	16.8	15.3	9.8	8.4	6.6
14.0	26.1	25.5	22.3	20.9	16.4	14.9	9.7	8.2	6.5
15.0	24.2	23.7	21.3	20.0	15.9	14.5	9.5	8.1	6.4
16.0	22.2	21.9	20.3	19.1	15.4	14.1	9.3	7.9	6.3
17.0	20.5	20.2	19.3	18.2	15.0	13.7	9.1	7.8	6.2
18.0	19.0	18.7	18.2	17.3	14.5	13.3	8.9	7.6	6.0
19.0	17.7	17.4	17.2	16.5	14.0	12.9	8.7	7.5	5.9
20.0	16.5	16.2	16.1	15.6	13.5	12.5	8.6	7.3	5.8
22.0	14.6	14.2	14.1	13.8	12.6	11.7	8.2	7.0	5.6
24.0	13.0	12.6	12.5	12.2	11.6	10.9	7.8	6.7	5.4
26.0	11.7	11.3	11.2	10.9	10.7	10.1	7.5	6.4	5.2
28.0	10.8/27.6	10.2	10.1	9.8	9.7	9.3	7.1	6.1	5.0
30.0		9.3	9.1	8.8	8.8	8.4	6.8	5.8	4.7
32.0		8.5	8.3	8.0	8.0	7.6	6.4	5.5	4.5
34.0		8.3/32.5	7.6	7.3	7.2	6.9	6.0	5.2	4.3
36.0			7.0	6.6	6.6	6.3	5.7	4.9	4.1
38.0			6.6/37.3	6.1	6.0	5.7	5.3	4.6	3.8
40.0				5.6	5.5	5.2	5.0	4.3	3.6
42.0				5.2	5.1	4.7	4.6	4.1	3.4
44.0				5.1/42.2	4.7	4.3	4.3	3.7	3.2
46.0					4.3	4.0	3.9	3.4	3.0
48.0					4.2/47.0	3.6	3.6	3.1	2.7
50.0						3.3	3.3	2.9	2.5
52.0						3.1/51.9	3.0	2.6	2.4
54.0							2.7	2.3	2.2
56.0							2.5	2.1	1.9
58.0							2.4/56.7	1.9	1.7
60.0								1.7	1.5
62.0								1.5/61.6	1.3
64.0									1.1
66.0									1.0
68.0									0.9/66.4
70.0	Table no. 3300R-75/2527/37.7/06.03. SHLH								
Number of strands	4	4	3	3	2	2	1	1	1

3300E Crane equipment



SH main boom with FS fixed fly boom



See page 24 for boom assembly

3300E Load ratings



SH main boom with FS fixed fly boom

37.7 t 0 t		Main boom length [m]																	
5°		29.9				35.5				41.1				46.7				52.3	
Outreach [m]	Fly boom length [m]																		
	13.1	18.7	24.3	29.9	13.1	18.7	24.3	29.9	13.1	18.7	24.3	29.9	13.1	18.7	24.3	29.9	6.0	18.7	
8.4	24.0																		
9.0	24.0	22.0/9.6			24.0/9.1				24.0/9.8										
10.0	24.0	21.7	15.0/10.7		24.0	20.2/10.3			24.0				21.6/10.5						
11.0	24.0	21.0	14.9	9.8/11.9	24.0	19.8	13.9/11.4		24.0	18.2			21.2	16.2/11.6			18.0/11.2		
12.0	24.0	20.3	14.5	9.8	24.0	19.1	13.7	9.3/12.6	23.0	17.6	12.8/12.1		20.4	16.0	11.1/12.8		17.5	14.1/12.3	
12.6	17.5																		
13.0	24.0	19.6	14.2	9.6	23.7	18.5	13.4	9.2	22.0	17.1	12.5	8.8/13.3	19.6	15.5	11.0		16.9	13.8	
14.0	23.8	18.9	13.9	9.4	22.5	17.8	13.1	9.1	21.0	16.5	12.2	8.7	18.8	15.0	10.8	8.2	16.3	13.4	
15.0	22.4	18.2	13.5	9.3	21.2	17.2	12.7	8.9	19.9	16.0	11.9	8.5	18.0	14.6	10.5	8.0	15.7	13.0	
16.0	20.9	17.5	13.2	9.1	20.0	16.6	12.4	8.7	18.9	15.4	11.6	8.3	17.2	14.1	10.3	7.9	15.1	12.6	
17.0	19.4	16.8	12.8	8.9	18.7	15.9	12.1	8.5	17.9	14.9	11.3	8.2	16.4	13.6	10.0	7.7	14.5	12.2	
18.0	18.0	16.1	12.5	8.7	17.5	15.3	11.7	8.4	16.8	14.3	11.0	8.0	15.6	13.1	9.8	7.5	13.9	11.8	
19.0	16.6	15.4	12.1	8.6	16.3	14.7	11.4	8.2	15.8	13.7	10.7	7.8	14.8	12.6	9.5	7.4	13.3	11.4	
20.0	15.5	14.7	11.8	8.4	15.1	14.0	11.1	8.0	14.8	13.2	10.4	7.6	14.0	12.2	9.2	7.2	12.7	11.0	
22.0	13.5	13.3	11.1	8.1	13.1	12.8	10.4	7.7	12.8	12.1	9.8	7.3	12.4	11.2	8.7	6.8	11.5	10.2	
24.0	11.8	11.9	10.4	7.7	11.5	11.5	9.8	7.3	11.1	11.0	9.2	7.0	10.8	10.2	8.2	6.5	10.3	9.4	
26.0	10.5	10.6	9.7	7.4	10.1	10.2	9.1	7.0	9.8	9.8	8.6	6.6	9.4	9.3	7.7	6.2	9.1	8.6	
28.0	9.4	9.4	9.0	7.0	9.0	9.1	8.5	6.6	8.7	8.7	8.0	6.3	8.3	8.3	7.2	5.8	7.9	7.8	
30.0	8.4	8.5	8.3	6.7	8.0	8.1	7.8	6.3	7.7	7.8	7.4	5.9	7.3	7.4	6.7	5.5	7.0	7.0	
32.0	7.6	7.6	7.6	6.3	7.2	7.3	7.2	5.9	6.8	6.9	6.8	5.6	6.5	6.5	6.2	5.2	6.1	6.2	
34.0	6.9	6.9	6.9	6.0	6.5	6.5	6.5	5.6	6.1	6.2	6.1	5.2	5.7	5.8	5.6	4.8	5.4	5.4	
36.0	6.2	6.3	6.3	5.6	5.8	5.9	5.9	5.3	5.5	5.5	5.5	4.9	5.1	5.1	5.1	4.5	4.7	4.8	
38.0	5.7	5.7	5.7	5.3	5.3	5.3	5.3	4.9	4.9	5.0	5.0	4.6	4.5	4.6	4.6	4.1	4.2	4.2	
40.0	5.2/39.7	5.2	5.2	5.0	4.8	4.8	4.8	4.6	4.4	4.4	4.5	4.2	4.0	4.1	4.1	3.8	3.7	3.7	
42.0		4.7	4.7	4.6	4.3	4.3	4.3	4.2	3.9	4.0	4.0	3.9	3.6	3.6	3.6	3.5	3.2	3.2	
44.0		4.3	4.3	4.3	3.9	3.9	3.9	3.9	3.5	3.6	3.6	3.5	3.1	3.2	3.2	3.1	2.8	2.8	
46.0		4.2/44.7	4.0	3.9	3.8/44.5	3.6	3.6	3.5	3.2	3.2	3.2	3.2	2.8,2	2.8	2.8	2.8	2.4	2.4	
48.0			3.6	3.6		3.2	3.2	3.2	2.8	2.9	2.9	2.8	2.4	2.5	2.5	2.4	2.1	2.1	
50.0			3.3/49.8	3.3		3.0/49.6	2.9	2.9	2.6/49.4	2.6	2.5	2.5	2.1	2.2	2.2	2.1	1.8	1.8	
52.0				3.0			2.6	2.6		2.3	2.3	2.2	1.9	1.9	1.9	1.8	1.5	1.5	
54.0				2.7			2.4	2.3		2.0	2.0	2.0	1.6	1.6	1.6	1.6	1.2	1.2	
56.0				2.6/54.9			2.3/54.7	2.1		2.0/54.4	1.8	1.7	1.6/54.2	1.4	1.4	1.3	1.0	1.0	
58.0								1.9			1.5	1.5		1.2	1.1	1.1	0.8	0.8	
60.0								1.7/59.7			1.4/59.5	1.3		1.0/59.3	0.9	0.9	0.7/59.0	0.6	
62.0												1.1			0.7	0.7			
64.0												0.9			0.6	0.5			
66.0												0.8/64.6							
68.0	Table no. 3300R-75/2527/37.7/10.10. SHFS 5																		
Number of strands	2	2	2	1	2	2	2	1	2	2	2	1	2	2	1	1	2	2	

3300E Load ratings



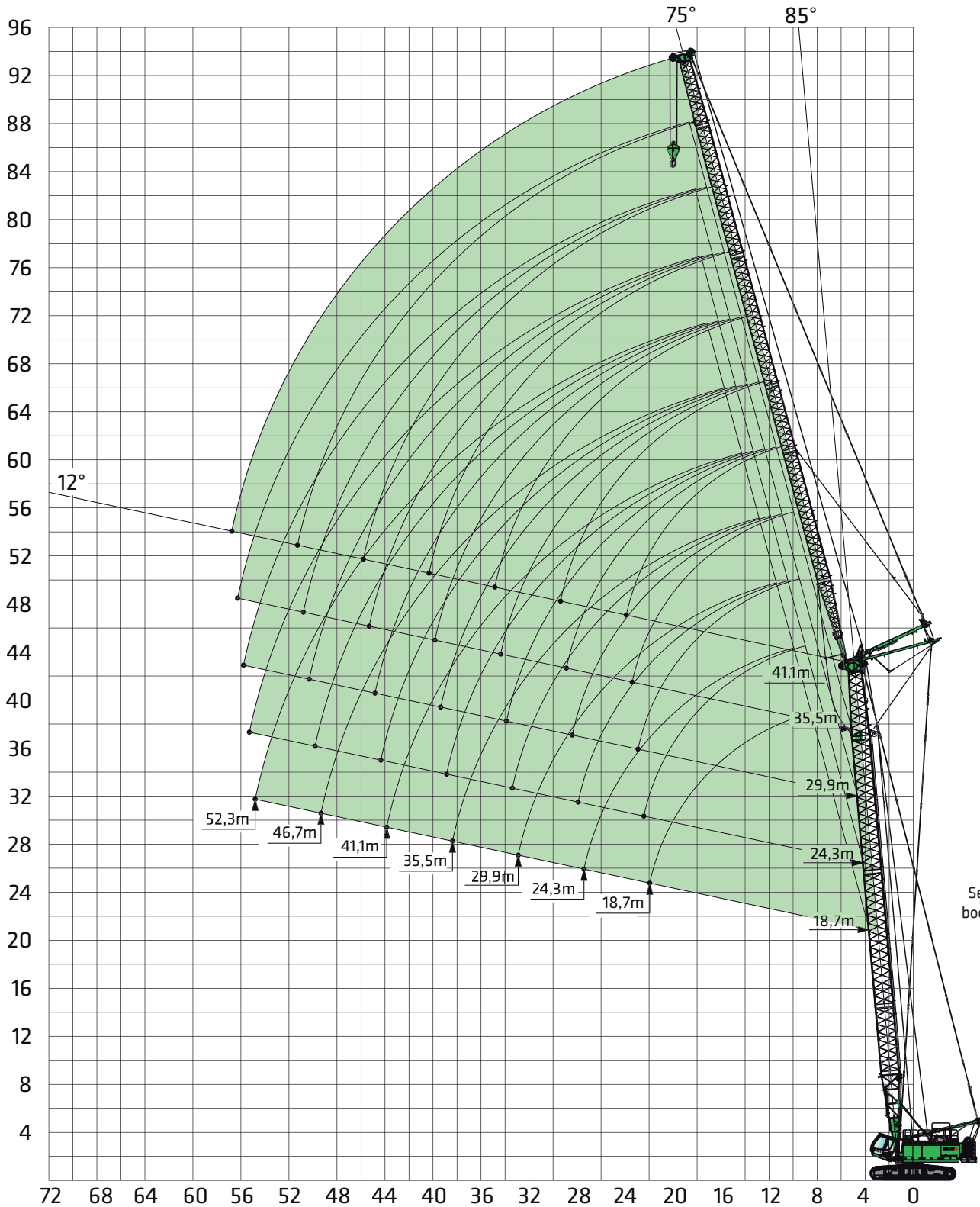
SH main boom with FS fixed fly boom

37.7 t 0 t		Main boom length [m]																	
25°		29.9				35.5				41.1				46.7				52.3	
Outreach [m]	Fly boom length [m]																		
	13.1	18.7	24.3	29.9	13.1	18.7	24.3	29.9	13.1	18.7	24.3	29.9	13.1	18.7	24.3	29.9	6.0	18.7	
8.4																			
9.0																			
10.0																			
11.0																			
12.0																			
12.6	17.5																		
13.0	17.3				15.7/13.3														
14.0	16.8				15.4				14.3				13.0/14.7						
15.0	16.3	12.0/15.6			15.0				13.9				12.9				12/15.4		
16.0	15.8	11.9			14.5	11.0/16.3			13.5				12.5				11.8		
17.0	15.3	11.6			14.1	10.8			13.1	10.0			12.2	9.2/17.7			11.5		
18.0	14.8	11.4	8.6/18.6		13.7	10.6			12.8	9.8			11.9	9.1			11.2	8.5/18.3	
19.0	14.3	11.1	8.5		13.3	10.4	7.9/19.3		12.4	9.6			11.5	8.9			10.8	8.4	
20.0	13.8	10.9	8.4	6.5/21.5	12.8	10.1	7.8		12.0	9.3	7.3		11.2	8.7	6.7/20.6		10.5	8.2	
22.0	12.9	10.3	8.1	6.4	12.0	9.6	7.5	5.9/22.2	11.2	8.9	7.0	5.5/22.9	10.5	8.3	6.5	5.1/23.6	9.9	7.8	
24.0	11.9	9.8	7.8	6.2	11.1	9.2	7.2	5.7	10.5	8.5	6.7	5.4	9.8	7.9	6.3	5.1	9.2	7.4	
26.0	10.9	9.3	7.4	6.0	10.3	8.7	6.9	5.5	9.7	8.0	6.5	5.2	9.1	7.5	6.0	4.9	8.6	7.0	
28.0	9.9	8.8	7.1	5.8	9.4	8.2	6.6	5.3	8.9	7.6	6.2	5.0	8.4	7.1	5.7	4.7	7.9	6.7	
30.0	8.9	8.2	6.8	5.6	8.6	7.7	6.3	5.1	8.2	7.2	5.9	4.8	7.7	6.7	5.5	4.5	7.3	6.3	
32.0	8.0	7.7	6.5	5.4	7.7	7.2	6.0	4.9	7.4	6.7	5.6	4.6	7.0	6.3	5.2	4.3	6.6	5.9	
34.0	7.2	7.2	6.2	5.2	6.9	6.7	5.7	4.7	6.6	6.3	5.4	4.4	6.3	5.9	4.9	4.1	6.0	5.5	
36.0	6.5	6.7	5.9	5.0	6.2	6.3	5.4	4.5	5.9	5.8	5.1	4.2	5.6	5.5	4.7	3.9	5.3	5.1	
38.0	5.9	6.2	5.6	4.8	5.6	5.8	5.2	4.3	5.3	5.4	4.8	4.0	5.0	5.1	4.4	3.7	4.7	4.7	
40.0	5.4	5.6	5.3	4.6	5.1	5.3	4.9	4.1	4.8	5.0	4.5	3.8	4.5	4.7	4.1	3.5	4.2	4.4	
42.0	5.1/40.8	5.1	4.9	4.3	4.6	4.8	4.6	3.9	4.3	4.5	4.2	3.6	4.0	4.3	3.9	3.3	3.6	4.0	
44.0		4.6	4.6	4.1	4.1	4.4	4.3	3.7	3.8	4.1	4.0	3.4	3.5	3.9	3.6	3.1	3.2	3.6	
46.0		4.2	4.3	3.9	3.7/45.7	3.9	4.0	3.5	3.4	3.7	3.7	3.2	3.1	3.5	3.3	2.9	2.8	3.2	
48.0		4.1/46.4	4.0	3.7		3.5	3.7	3.3	3.0	3.3	3.4	3.0	2.7	3.1	3.1	2.7	2.4	2.8	
50.0			3.7	3.5		3.2	3.4	3.1	2.7	2.9	3.1	2.8	2.4	2.8	2.8	2.5	2.1	2.5	
52.0			3.4	3.3		3.0/51.3	3.1	2.9	2.6/50.5	2.6	2.8	2.6	2.1	2.4	2.5	2.3	1.7	2.1	
54.0				3.1			2.8	2.7		2.3	2.6	2.4	1.8	2.1	2.3	2.1	1.5	1.8	
56.0				2.9			2.5	2.5		2.0	2.3	2.2	1.6/55.4	1.8	2.0	1.9	1.2	1.5	
58.0				2.7/57.6			2.4/56.8	2.3			2.0	2.0		1.5	1.8	1.7	0.9	1.3	
60.0								2.1			1.7	1.8		1.3	1.5	1.5	0.7	1.0	
62.0								1.9			1.5/61.7	1.6		1.1/61.0	1.2	1.3	0.7/60.2	0.8	
64.0								1.8/62.4				1.4				1.0	1.1	0.6	
66.0												1.2				0.8	0.9		
68.0												1.0/67.3				0.7/66.5	0.7		
Number of strands	2	2	1	1	2	2	1	1	2	2	1	1	2	1	1	1	2	1	

3300E Crane equipment



SH main boom with WS luffing fly boom



See page 24 for boom assembly.

3300E Load ratings



SH main boom with WS luffing fly boom

37.7 t 0 t		Main boom length [m]															
85°		18.7						24.3						29.9			
Outreach [m]	Fly boom length [m]																
	18.7	24.3	29.9	35.5	41.1	46.7	52.3	18.7	24.3	29.9	35.5	41.1	46.7	52.3	18.7	24.3	29.9
9.0	37.0/9.3							33.0/9.8									
10.0	35.7	28.2/10.8						32.6							28.9/10.3		
11.0	33.9	28.0						30.8	25.6/11.3						27.8	22.9/11.7	
12.0	32.1	27.1	21.3/12.2					29.2	24.9	19.6/12.7					26.2	22.7	
13.0	30.4	26.2	20.9	16.4/13.7				27.5	24.1	19.5					24.7	21.8	17,813,2
14.0	28.7	25.3	20.4	16.2				26.0	23.2	19.0	14.8/14.2				23.3	21.0	17.4
15.0	26.6	24.4	19.8	15.7	13.3/15.1			24.6	22.4	18.5	14.5				22.1	20.2	17.0
16.0	24.5	23.5	19.3	15.2	13.1	9.7/16.6		23.2	21.5	18.0	14.1	11.7/15.6			20.9	19.5	16.5
17.0	22.6	22.5	18.8	14.8	12.9	9.7		21.9	20.7	17.5	13.7	11.5	9.0/17.1		19.8	18.7	16.1
18.0	21.0	20.9	18.2	14.3	12.6	9.5	7.6	20.8	19.9	17.1	13.3	11.4	8.9	7.1/18.5	18.7	18.0	15.6
19.0	19.6	19.5	17.7	13.8	12.4	9.4	7.5	19.5	19.1	16.6	13.0	11.3	8.8	7.1	17.8	17.3	15.2
20.0	18.4	18.3	17.1	13.4	12.2	9.3	7.4	18.3	18.1	16.1	12.6	11.1	8.7	7.0	17.0	16.6	14.7
22.0	16.2	16.2	16.0	12.5	11.7	9.1	7.2	16.1	16.0	15.1	11.9	10.8	8.6	6.8	15.6	15.3	13.8
24.0	16.1/22.1	14.4	14.4	11.7	11.2	8.8	7.0	15.6/22.6	14.3	14.1	11.2	10.5	8.4	6.6	14.9/23.1	14.0	12.9
26.0		13.0	13.0	10.9	10.8	8.6	6.8		12.9	12.8	10.5	10.1	8.2	6.5		12.8	12.0
28.0		12.0/27.6	11.8	10.1	10.3	8.3	6.6		11.6	11.6	9.9	9.8	7.9	6.3		11.6	11.2
30.0			10.7	9.4	9.8	8.1	6.4		11.6/28.1	10.6	9.3	9.4	7.7	6.1		11.3/28.6	10.3
32.0			9.8	8.7	9.3	7.8	6.2			9.7	8.7	9.0	7.5	6.0			9.5
34.0			9.4/33.1	8.1	8.6	7.5	6.0			9.1/33.5	8.1	8.5	7.2	5.8			8.6
36.0				7.5	8.0	7.2	5.8				7.6	7.9	6.9	5.6			8.6/34.1
38.0				6.9	7.4	6.9	5.6				7.1	7.3	6.6	5.4			
40.0				6.8/38.6	6.8	6.6	5.5				6.8/39.0	6.8	6.3	5.2			
42.0					6.4	6.1	5.3					6.3	6.0	5.0			
44.0					5.9	5.7	5.1					5.9	5.6	4.8			
46.0						5.3	4.9					5.8/44.5	5.2	4.7			
48.0						4.9	4.7						4.8	4.5			
50.0						4.7	4.4						4.5	4.3			
52.0							4.1							4.0			
54.0							3.8							3.7			
56.0							3.7/55.0							3.5/55.5			
58.0																	
60.0																	
62.0																	
64.0																	
66.0																	
68.0																	
70.0																	
Table no. 3300R-75/2527/37.7/06.03 SHWS 85																	
Number of strands	4	3	2	2	2	2	2	3	3	2	2	2	2	2	3	2	2

3300E Load ratings



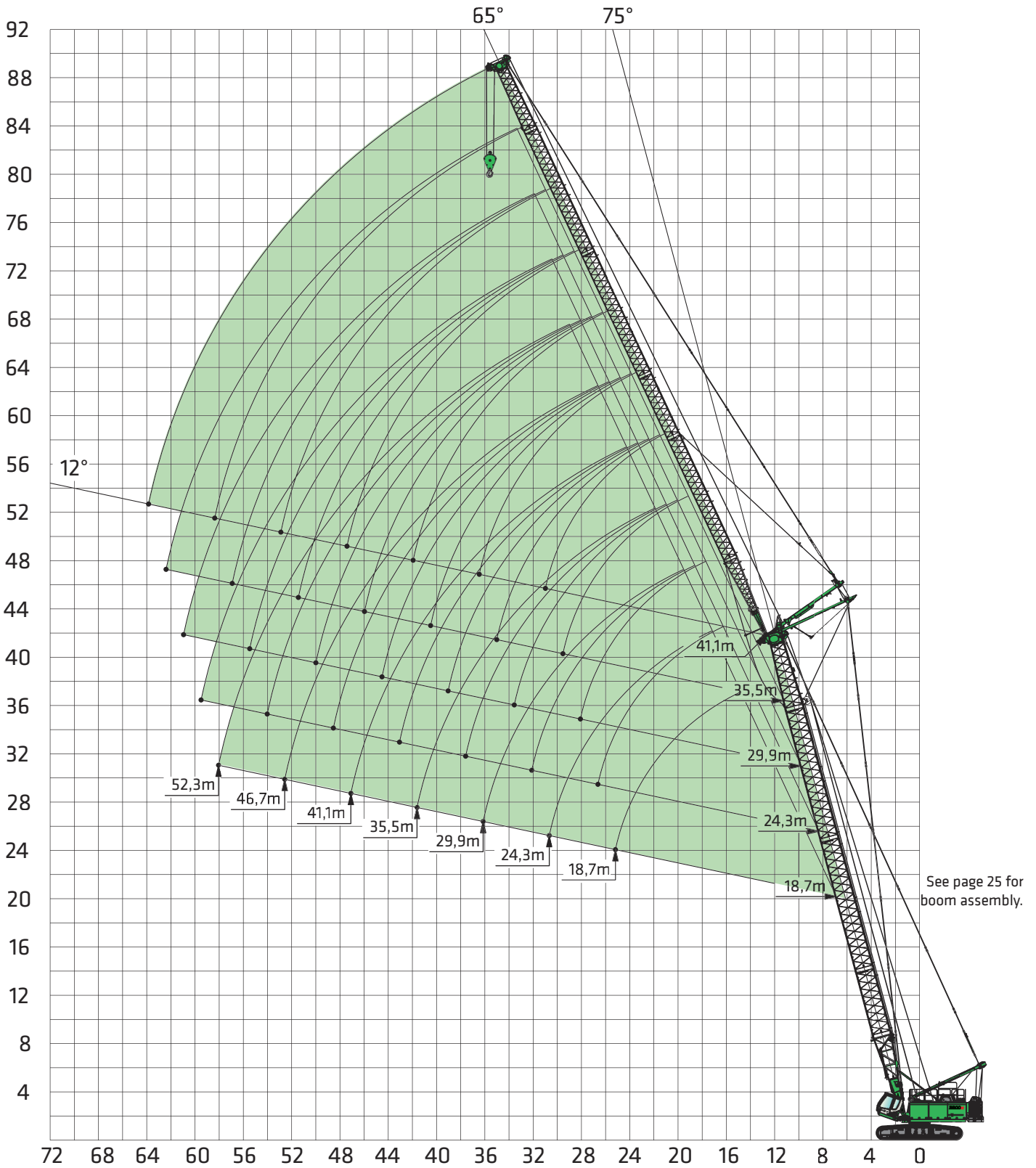
SH main boom with WS luffing fly boom

37.7 t 0 t		Main boom length [m]																	
85°		29.9				35.5								41.1					
Outreach [m]	Fly boom length [m]																		
	35.5	41.1	46.7	52.3	18.7	24.3	29.9	35.5	41.1	46.7	52.3	18.7	24.3	29.9	35.5	41.1	46.7	52.3	
9.0																			
10.0					24.6/10.8														
11.0					24.3							20.2/11.3							
12.0					23.0	20.0/12.2						19.5	17.0/12.7						
13.0					21.7	19.4	15.9/13.7					18.6	16.8						
14.0	13.4/14.6				20.6	18.6	15.7					17.8	16.1	14.0/14.2					
15.0	13.3				19.5	17.9	15.3	12.1/15.1				17.0	15.4	13.5	11.0/15.6				
16.0	13.0	10.5/16.1			18.5	17.1	14.8	11.8	9.4/16.6			16.2	14.7	13.0	10.9				
17.0	12.7	10.4	8.4/17.5		17.6	16.5	14.3	11.5	9.4			15.5	14.1	12.5	10.6	8.6/17.1			
18.0	12.3	10.4	8.4		16.7	15.8	13.9	11.3	9.3	7.6		14.9	13.5	12.0	10.2	8.5	6.9/18.5		
19.0	12.0	10.3	8.3	6.7	16.0	15.2	13.5	11.0	9.2	7.5	6.1/19.5	14.2	12.9	11.5	9.9	8.3	6.9		
20.0	11.7	10.2	8.2	6.6	15.3	14.6	13.0	10.7	9.1	7.5	6.1	13.7	12.4	11.1	9.6	8.2	6.8	5.6	
22.0	11.1	10.0	8.1	6.5	14.2	13.4	12.2	10.2	8.9	7.3	6.0	12.7	11.5	10.3	9.1	7.9	6.6	5.5	
24.0	10.6	9.7	7.9	6.3	13.5/23.6	12.4	11.4	9.6	8.7	7.2	5.8	11.8	10.6	9.5	8.6	7.6	6.5	5.4	
26.0	10.0	9.4	7.7	6.2		11.5	10.6	9.1	8.5	7.0	5.7	11.8/24.1	9.9	8.8	8.1	7.3	6.3	5.3	
28.0	9.5	9.1	7.5	6.0		10.7	9.9	8.7	8.2	6.9	5.6		9.4	8.2	7.6	7.0	6.1	5.2	
30.0	9.0	8.8	7.3	5.8		10.3/29.1	9.2	8.2	7.9	6.7	5.4		9.0/29.6	7.7	7.2	6.7	5.9	5.1	
32.0	8.4	8.5	7.1	5.7			8.6	7.8	7.6	6.5	5.3			7.3	6.8	6.4	5.7	4.9	
34.0	8.0	8.1	6.9	5.5			8.0	7.3	7.2	6.2	5.1			6.9	6.4	6.1	5.5	4.8	
36.0	7.5	7.6	6.6	5.3			7.8/34.5	6.9	6.9	6.0	5.0			6.8/35.0	6.0	5.8	5.3	4.6	
38.0	7.0	7.1	6.3	5.2				6.6	6.5	5.8	4.8				5.7	5.5	5.1	4.5	
40.0	6.7/39.5	6.6	6.1	5.0				6.2	6.1	5.5	4.6				5.5	5.1	4.8	4.3	
42.0		6.1	5.8	4.8					5.6	5.2	4.5				5.4/40.5	4.8	4.6	4.1	
44.0		5.7	5.4	4.6					5.2	4.9	4.3					4.5	4.3	3.9	
46.0		5.4/45.0	5.0	4.4					4.8/45.5	4.6	4.1					4.2	4.1	3.7	
48.0			4.7	4.2						4.3	3.9						3.8	3.5	
50.0			4.4	4.0						4.0	3.7						3.5	3.3	
52.0			4.3/50.5	3.8						3.8/51.0	3.5						3.3/51.5	3.1	
54.0				3.6							3.3							2.9	
56.0				3.4							3.0							2.6	
58.0											3.0/56.4							2.5/57.0	
60.0																			
62.0																			
64.0																			
66.0																			
68.0																			
70.0																			
Table no. 3300R-75/2527/37.7/06.03 SHWS 85																			
Number of strands	2	2	2	2	3	2	2	2	2	2	2	2	2	2	2	2	2	2	

3300E Crane equipment



SH main boom with WS luffing fly boom



3300E Load ratings



SH main boom with WS luffing fly boom

37.7 t 0 t		Main boom length [m]															
75°		18.7						24.3						29.9			
Outreach [m]	Fly boom length [m]																
	18.7	24.3	29.9	35.5	41.1	46.7	52.3	18.7	24.3	29.9	35.5	41.1	46.7	52.3	18.7	24.3	29.9
9.0																	
10.0																	
11.0																	
12.0																	
13.0																	
14.0																	
15.0	23.0/15.6																
16.0	22.3																
17.0	20.8	19.0/17.9						19.9									
18.0	19.3	18.9						18.6							17.3/18.5		
19.0	18.0	17.8						17.4	16.6/19.4						16.8		
20.0	16.7	16.7	16.1/20.3					16.3	16.1	14.3/21.8					15.7	14.6/20.8	
22.0	14.7	14.8	14.7	13.5/22.7				14.3	14.3	14.1					13.9	13.7	12.5/23.2
24.0	13.0	13.2	13.2	12.7	11.4/25.0			12.7	12.8	12.7	12.3/24.1				12.3	12.3	12.1
26.0	12.3/25.3	11.7	11.9	11.5	11.0			11.4	11.5	11.5	11.2	10.3/26.5			11.1	11.1	10.9
28.0		10.6	10.7	10.5	10.1	8.3	6.2/29.8	11.0/26.8	10.3	10.3	10.1	9.7	7.7/28.9		10.1	10.0	9.8
30.0		9.7	9.7	9.5	9.3	7.9	6.2		9.4	9.4	9.2	8.9	7.5	5.8/31.2	10.0/28.3	9.0	8.9
32.0		9.4/30.8	8.8	8.7	8.6	7.5	6.0		8.6	8.5	8.3	8.1	7.1	5.7		8.2	8.2
34.0			8.1	7.9	7.9	7.1	5.9		8.6/32.3	7.8	7.6	7.4	6.7	5.6		7.7/33.7	7.5
36.0			7.5	7.3	7.3	6.7	5.8			7.5	6.9	6.8	6.4	5.4			6.9
38.0			7.4/36.3	6.7	6.7	6.4	5.6			6.8/37.8	6.4	6.3	6.0	5.3			6.4
40.0				6.2	6.2	5.9	5.4				5.9	5.8	5.5	5.1			6.1/39.2
42.0				5.9/41.8	5.7	5.4	5.2				5.6	5.4	5.1	4.8			
44.0					5.3	5.0	4.8				5.3/43.2	5.0	4.7	4.4			
46.0					5.0	4.7	4.4					4.6	4.3	4.1			
48.0					4.8/47.3	4.3	4.1					4.3	4.0	3.8			
50.0						4.0	3.8					4.2/48.7	3.7	3.5			
52.0						3.8	3.5						3.5	3.2			
54.0						3.7/52.7	3.3						3.2	3.0			
56.0							3.0						3.2/54.2	2.8			
58.0							2.8							2.6			
60.0							2.8/58.2							2.4/59.7			
62.0																	
64.0																	
66.0																	
68.0																	
70.0																	
Table no. 3300R-75/2527/37.7/06.03 SHWS 75																	
Number of strands	4	3	2	2	2	2	2	3	3	2	2	2	2	2	3	2	2

3300E Load ratings



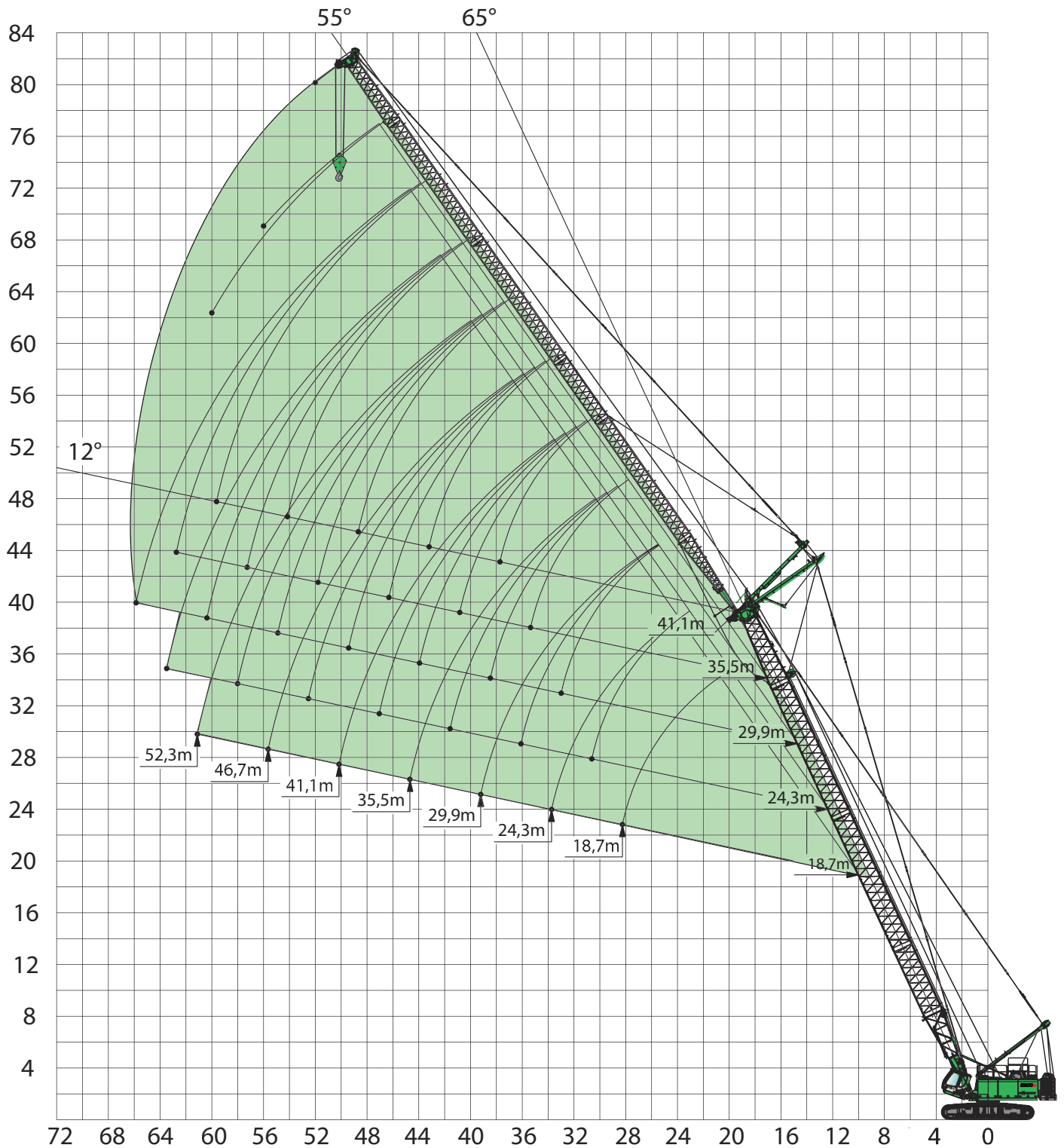
SH main boom with WS luffing fly boom

37.7 t 0 t		Main boom length [m]																	
75°		29.9				35.5								41.1					
Outreach [m]	Fly boom length [m]																		
	35.5	41.1	46.7	52.3	18.7	24.3	29.9	35.5	41.1	46.7	52.3	18.7	24.3	29.9	35.5	41.1	46.7	52.3	
9.0																			
10.0																			
11.0																			
12.0																			
13.0																			
14.0																			
15.0																			
16.0																			
17.0																			
18.0																			
19.0																			
20.0					15.1/19.9							13.2/21.4							
22.0					13.3	12.8/22.3						12.7	11.2/23.7						
24.0	10.8/25.6				11.8	11.7	11.0/24.7					11.3	11.0						
26.0	10.6				10.6	10.5	10.2	9.4/27.0				10.1	9.9	9.5/26.1					
28.0	9.5	9.2			9.6	9.5	9.2	8.9	8.0/29.4			9.2	8.9	8.6	8.1/28.5				
30.0	8.6	8.4	7.1/30.3		8.8/29.7	8.6	8.4	8.1	7.8	6.5/31.8		8.3	8.1	7.8	7.5	6.9/30.8			
32.0	7.9	7.6	6.8	5.5/32.7		7.8	7.7	7.4	7.1	6.4		7.9/31.1	7.4	7.1	6.8	6.5	5.8/33.2		
34.0	7.2	7.0	6.4	5.4		7.2	7.0	6.7	6.5	6.0	5.0/34.1		6.8	6.5	6.2	5.9	5.6	4.7/35.6	
36.0	6.6	6.4	6.0	5.2		6.9/35.2	6.4	6.2	5.9	5.6	4.8		6.2	6.0	5.7	5.4	5.1	4.6	
38.0	6.1	5.9	5.6	5.0			5.9	5.7	5.4	5.1	4.6		6.0/36.6	5.5	5.2	4.9	4.6	4.3	
40.0	5.6	5.4	5.1	4.8			5.5	5.2	5.0	4.7	4.4			5.1	4.8	4.5	4.2	3.9	
42.0	5.2	5.0	4.7	4.4			5.4/40.7	4.8	4.6	4.3	4.0			4.7	4.4	4.1	3.8	3.5	
44.0	4.9	4.6	4.3	4.1				4.5	4.2	3.9	3.7			4.7/42.1	4.1	3.8	3.5	3.2	
46.0	4.7/44.7	4.3	4.0	3.7				4.2	3.9	3.6	3.3				3.8	3.5	3.2	2.9	
48.0		4.0	3.7	3.4				4.1/46.1	3.6	3.3	3.1				3.6/47.6	3.2	2.9	2.6	
50.0		3.7	3.4	3.1					3.3	3.0	2.8					3.0	2.7	2.4	
52.0		3.7/50.2	3.2	2.9					3.2/51.6	2.8	2.5					2.8	2.4	2.2	
54.0			2.9	2.7						2.6	2.3					2.7/53.0	2.2	2.0	
56.0			2.8/55.6	2.5						2.4	2.1						2.0	1.8	
58.0				2.3						2.3/57.1	1.9						1.9	1.6	
60.0				2.1							1.8						1.8/58.5	1.4	
62.0				2.0/61.1							1.7							1.3	
64.0											1.6/62.6							1.2	
66.0																			
68.0																			
70.0																			
Table no. 3300R-75/2527/37.7/06.03 SHWS 75																			
Number of strands	2	2	2	2	3	2	2	2	2	2	2	2	2	2	2	2	2	2	2

3300E Crane equipment



SH main boom with WS luffing fly boom



See page 24 for boom assembly.

3300E Load ratings



SH main boom with WS luffing fly boom

37.7 t 0 t		Main boom length [m]															
65°		18.7						24.3						29.9			
Outreach [m]	Fly boom length [m]																
	18.7	24.3	29.9	35.5	41.1	46.7	52.3	18.7	24.3	29.9	35.5	41.1	46.7	52.3	18.7	24.3	29.9
9.0																	
10.0																	
11.0																	
12.0																	
13.0																	
14.0																	
15.0																	
16.0																	
17.0																	
18.0																	
19.0																	
20.0	14.3/21.4																
22.0	13.8							11.7/23.8									
24.0	12.4	11.7/24.6						11.5									
26.0	11.1	11.0	9.8/27.8					10.5	9.6/27.0						9.4/26.1		
28.0	10.1	10.0	9.7					9.5	9.1						8.6	7.9/29.3	
30.0	9.9/28.4	9.1	8.9	8.2/31.0				8.6	8.3	8.1/30.2					7.8	7.6	
32.0		8.3	8.1	7.9				8.2/30.8	7.6	7.5	6.7/33.4				7.1	7.0	6.6/32.5
34.0		7.6/33.9	7.5	7.3	6.9/34.2				7.0	6.9	6.5				6.8/33.1	6.5	6.2
36.0			6.9	6.4	6.4	5.7/37.4			6.4	6.3	6.0	5.6/36.6				5.9	5.7
38.0			6.4	6.7	5.9	5.5			6.3/36.3	5.8	5.5	5.3	4.6/39.8			5.4	5.3
40.0			6.1/39.4	5.7	5.4	5.1	4.7/40.7			5.3	5.1	4.9	4.5			5.3/38.6	4.8
42.0				5.2	5.0	4.7	4.5			5.0/41.7	4.7	4.5	4.1	3.7/43.0			4.5
44.0				4.8	4.6	4.4	4.1				4.4	4.1	3.8	3.6			4.1
46.0				4.7/44.8	4.3	4.0	3.8				4.1	3.8	3.5	3.3			4.1/44.1
48.0					4.0	3.7	3.5				3.9/47.2	3.5	3.2	3.0			
50.0					3.8	3.5	3.2					3.2	3.0	2.8			
52.0					3.7/50.3	3.2	2.9					3.0	2.7	2.6			
54.0						3.0	2.7					2.9/52.7	2.5	2.3			
56.0						2.8/55.8	2.5						2.3	2.1			
58.0							2.3						2.2	1.9			
60.0							2.2						2.1/58.2	1.8			
62.0							2.0/61.3							1.6			
64.0														1.5/63.6			
66.0																	
68.0																	
70.0																	
Table no. 3300R-75/2527/37.7/06.03 SHWS 65																	
Number of strands	4	3	2	2	2	2	2	3	3	2	2	2	2	2	3	2	2

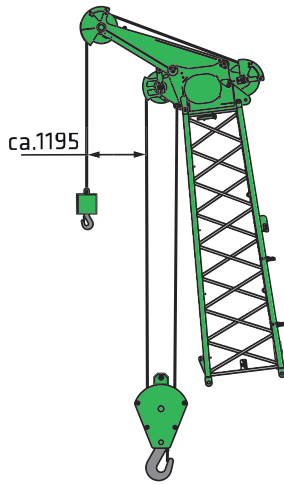
3300E Load ratings



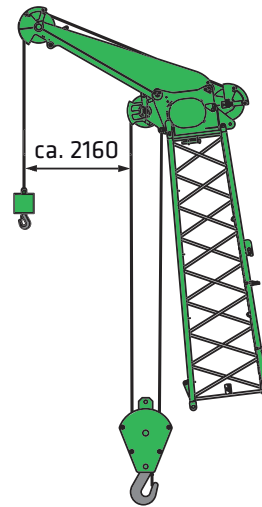
SH main boom with WS luffing fly boom

37.7 t 0 t		Main boom length [m]																	
65°		29.9				35.5								41.1					
Outreach [m]	Fly boom length [m]																		
	35.5	41.1	46.7	52.3	18.7	24.3	29.9	35.5	41.1	46.7	52.3	18.7	24.3	29.9	35.5	41.1	46.7	52.3	
9.0																			
10.0																			
11.0																			
12.0																			
13.0																			
14.0																			
15.0																			
16.0																			
17.0																			
18.0																			
19.0																			
20.0																			
22.0																			
24.0																			
26.0																			
28.0					7.3/28.5														
30.0					6.9	6.3/31.7						6.0/30.9							
32.0					6.3	6.2						5.7							
34.0	5.4/35.8				5.8	5.6	5.1/34.9					5.2	4.8/34.1						
36.0	5.3				5.4/35.5	5.1	4.9					4.7	4.4	3.9/37.3					
38.0	4.9	4.4/39.0				4.7	4.5	4.1/38.1				4.4/37.9	4.0	3.8					
40.0	4.6	4.2				4.4	4.2	3.8	3.3/41.3				3.7	3.5	3.0/40.5				
42.0	4.2	3.9	3.5/42.2			4.2/41.0	3.8	3.5	3.2				3.4	3.2	2.8	2.3/43.7			
44.0	3.9	3.6	3.3	2.7/45.4				3.5	3.2	3.0	2.5/44.5			3.2/43.4	2.9	2.6	2.3		
46.0	3.6	3.3	3.0	2.7				3.2	2.9	2.7	2.3	1.8/47.8			2.6	2.3	2.0	1.6/46.9	
48.0	3.3	3.0	2.7	2.4				3.2/46.5	2.7	2.5	2.1	1.8			2.4	2.1	1.8	1.5	
50.0	3.1/49.6	2.8	2.5	2.2					2.5	2.2	1.9	1.6			2.3/48.8	1.9	1.6	1.3	1.0/50.1
52.0		2.6	2.3	2.0					2.3	2.0	1.7	1.4				1.7	1.5	1.1	0.8
54.0		2.4	2.1	1.8						1.8	1.5	1.3				1.6	1.3	1.0	
56.0		2.3/55.1	1.9	1.6						1.7	1.4	1.1				1.6/54.3	1.2	0.8	
58.0			1.8	1.5						1.5/57.4	1.2	0.9					1.0		
60.0			1.6	1.3							1.1	0.8					0.9/59.8		
62.0			1.5/60.6	1.2							1.0								
64.0				1.0							0.9/62.9								
66.0				0.9															
68.0																			
70.0																			
Table no. 3300R-75/2527/37.7/06.03 SHWS 65																			
Number of strands	2	2	2	2	3	2	2	2	2	2	2	2	2	2	2	2	2	2	2

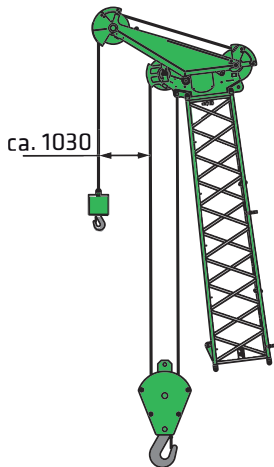
3300E Additional equipment



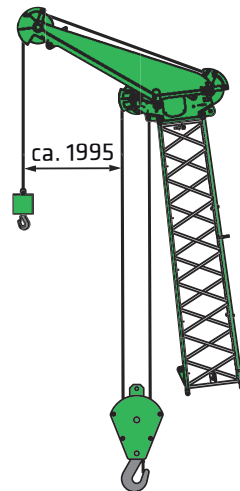
SH main boom with S12.1 auxiliary jib (12 t)



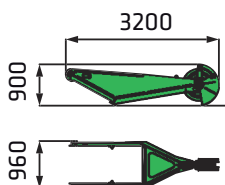
SH main boom with S24.1 auxiliary jib (24 t)



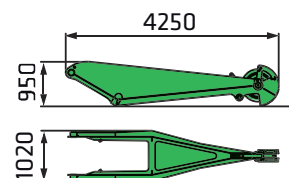
SHLH main boom with S12.1 auxiliary jib (12 t)



SHLH main boom with S24.1 auxiliary jib (24.1 t)



S12.1 auxiliary jib (370 kg)
12.0 t safe working load



S24.1 auxiliary jib (510 kg)
24.0 t safe working load

3300E Boom configuration

SH main boom

Boom length [m]		13.1	18.7	24.3	29.9	35.5	41.1	46.7	52.3	57.9	63.5	69.1
Type 1608 SH lower boom section	7.0 m	1	1	1	1	1	1	1	1	1	1	1
Type 1608 SH boom section	5.6 m	0	1	2	1	2	1	2	1	2	1	2
Type 1608 SH boom section	11.2 m	0	0	0	1	1	2	2	3	3	4	4
Type 1608/1370 SH conical boom section	5.6 m	1	1	1	1	1	1	1	1	1	1	1
T120 pulley head	0.5 m	1	1	1	1	1	1	1	1	1	1	1
S12.1 auxiliary jib (option)	12.0 t	x	x	x	x	x	x	x	x	x	x	-
S24.1 auxiliary jib (option)	24.0 t	x	x	x	x	x	x	x	x	x	x	-

SHLH main boom

Boom length [m]		29.9	35.5	41.1	46.7	52.3	57.9	63.5	69.1	74.7
Type 1608 SH lower boom section	7.0 m	1	1	1	1	1	1	1	1	1
Type 1608 SH boom section	5.6 m	1	2	2	1	1	2	2	1	1
Type 1608 SH boom section	11.2 m	0	0	0	1	1	1	1	2	2
Type 1608/1370 SH conical boom section	5.6 m	1	1	1	1	1	1	1	1	1
Type 1370 LH boom section	5.6 m	1	1	2	2	1	1	2	2	1
Type 1370 LH boom section	11.2 m	0	0	0	0	1	1	1	1	2
Type 130/610 LH conical boom section	5.6 m	1	1	1	1	1	1	1	1	1
T50 pulley head	0.5 m	1	1	1	1	1	1	1	1	1
S12.1 auxiliary jib (option)	12.0 t	x	x	x	x	x	x	x	x	x
S24.1 auxiliary jib (option)	24.0 t	x	x	x	x	x	x	x	x	x



For 160 kN winches with 26 mm rope diameter

Capacity	Weight	Rope strands and maximum safe working load [kg]										
		10	9	8	7	6	5	4	3	2	1	
15 t	450 kg											12,000
40 t 1-pulley	900 kg								36,000	24,000	12,000	
80 t 3-pulley	1000 kg				80,000	72,000	60,000	48,000	36,000	24,000	12,000	
120 t 5-pulley	1100 kg	120,000	108,000	96,000	84,000	72,000	60,000	48,000	36,000	24,000	12,000	

3300E Boom configuration

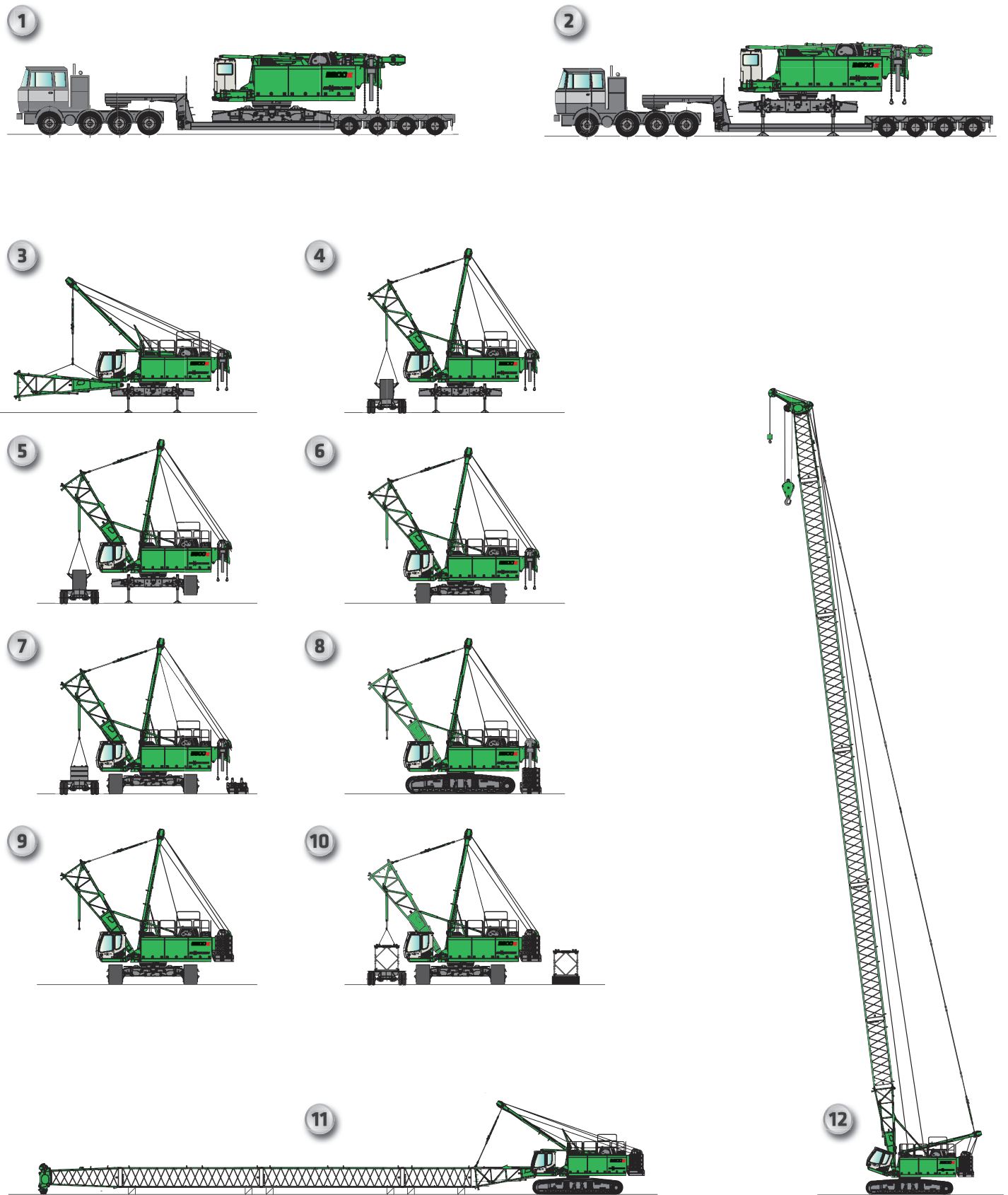
SHWS (SH main boom with WS luffing fly boom)

Boom length [m]		Main boom					Fly boom						
		18.7	24.3	29.9	35.5	41.1	18.7	24.3	29.9	35.5	41.1	46.7	52.3
Type 1608 SH lower boom section	7.0 m	1	1	1	1	1							
Type 1608 SH boom section	5.6 m	1	2	1	2	1							
Type 1608 SH boom section	11.2 m	0	0	1	1	2							
Type 1608/1370 SH conical boom section	5.6 m	1	1	1	1	1							
T120 pulley head	0.5 m	1	1	1	1	1							
Type 1370 SH lower fly boom section	7.0 m						1	1	1	1	1	1	1
Type 1370 LH boom section	5.6 m						1	2	1	2	1	2	1
Type 1370 LH boom section	11.2 m						0	0	1	1	2	2	3
Type 1370 LH conical boom section	5.6 m						1	1	1	1	1	1	1
T50 pulley head	0.5 m						1	1	1	1	1	1	1
Combination options													
Fly boom length [m]	18.7 m	x	x	x	x	x							
	24.3 m	x	x	x	x	x							
	29.9 m	x	x	x	x	x							
	35.5 m	x	x	x	x	x							
	41.1 m	x	x	x	x	x							
	46.7 m	x	x	x	x	x							
	52.3 m	x	x	x	x	x							

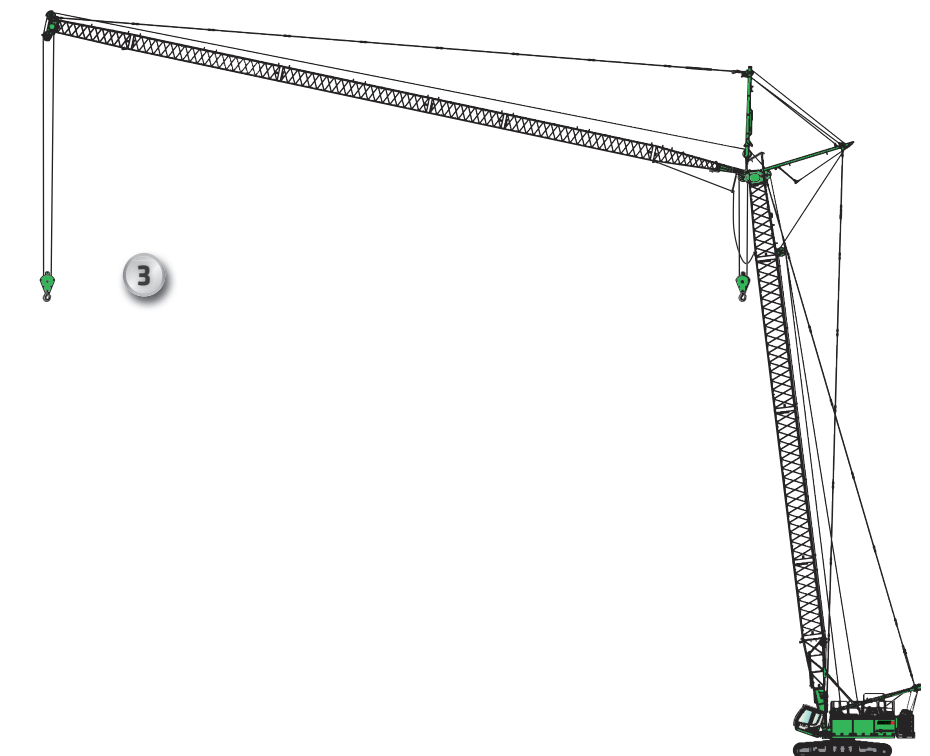
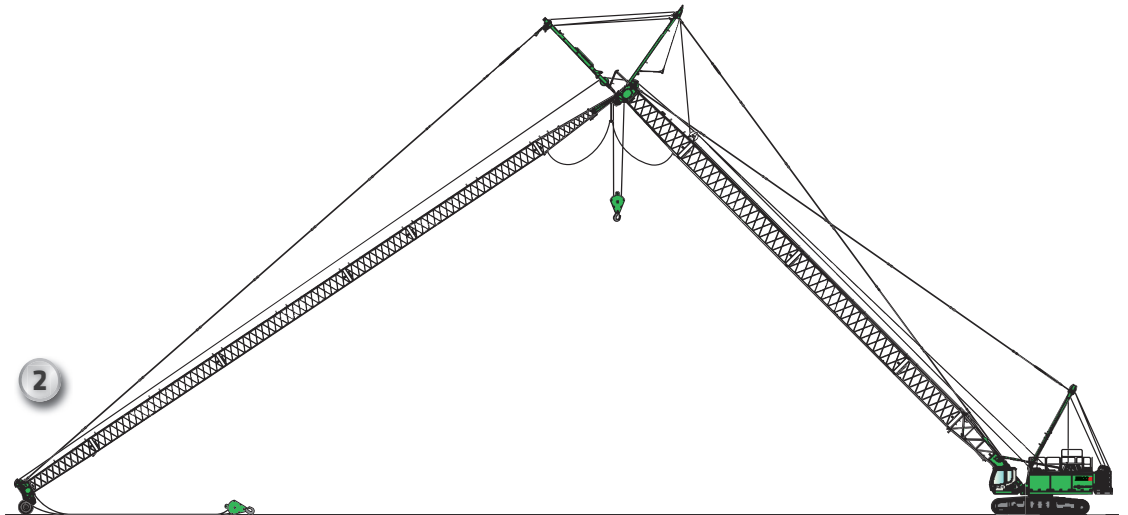
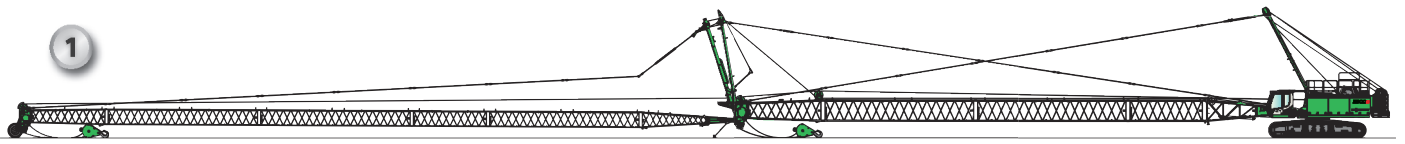
SHFS (SH main boom with FS fixed fly boom)

Boom length [m]		Main boom					Fly boom			
		29.9	35.5	41.1	46.7	52.3	13.7	18.7	24.3	29.9
Type 1608 SH lower boom section	7.0 m	1	1	1	1	1				
Type 1608 SH boom section	5.6 m	1	2	1	2	1				
Type 1608 SH boom section	11.2 m	1	1	2	2	3				
Type 1608/1370 SH conical boom section	5.6 m	1	1	1	1	1				
T120 pulley head	0.5 m	1	1	1	1	1				
Type 1370 SH lower fly boom section	7.0 m						1	1	1	1
Type 1370 LH boom section	5.6 m							1	2	3
Type 870 head piece	5.6 m						1	1	1	1
Combination options										
Fly boom length [m]	18.7 m	x	x	x	x	x				
	24.3 m	x	x	x	x	x				
	29.9 m	x	x	x	x					
	35.5 m	x	x	x	x					

3300E Self-assembly system



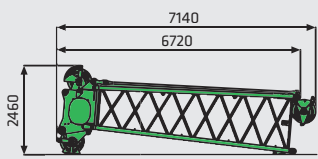
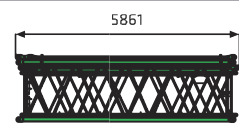
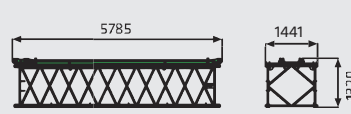
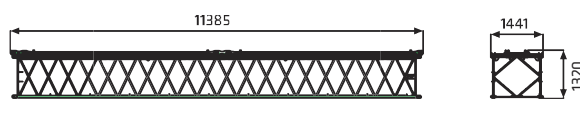
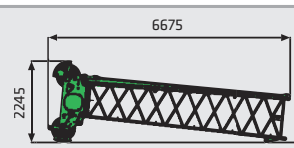
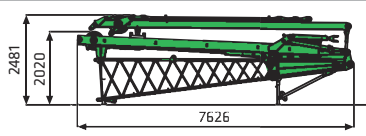
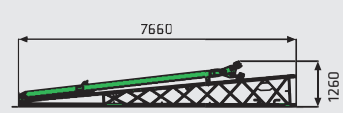
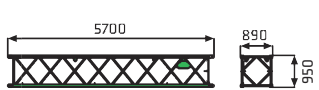
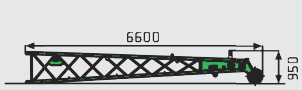
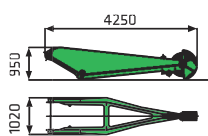
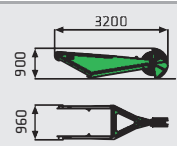
3300E Erecting the SHWS boom



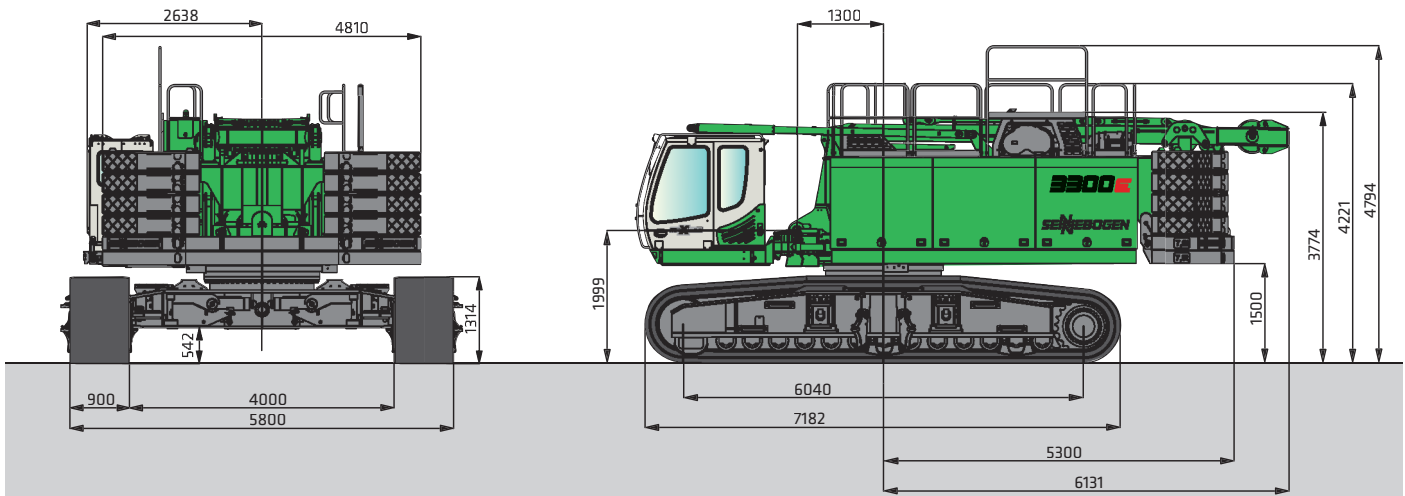
3300E Transport dimensions

	3300 basic machine with lower boom section	Transport weight 39.5 t Transport width 3,200 mm
	3300 basic machine without lower boom section	Transport weight 35.2 t Transport width 3,000 mm
	2x crawler (B8b, 900 mm flat track shoes)	Weight 2 x 13,000 kg
	Ballast base plate	Weight 1 x 7,600 kg
	Ballast base plate	Weight 1 x 7,600 kg
	Counterweight	Weight 8 x 2,800 kg
	7 m Type 1608 SH lower boom section (incl. adjustment winch)	Weight 4,300 kg Width 1,650 mm
	5.6 m Type 1608 SH boom section (with SH/SHWS guying)	Weight 870/1,000 kg
	11.2 m Type 1608 SH boom section (with SH/SHWS guying)	Weight 1,560/1,820 kg
	11.2 m Type 1608 SH boom section incl. 11.2 m Type 1370 LH with SH/SHWS guying	Weight 2,530/2,790 kg

3300E Transport dimensions

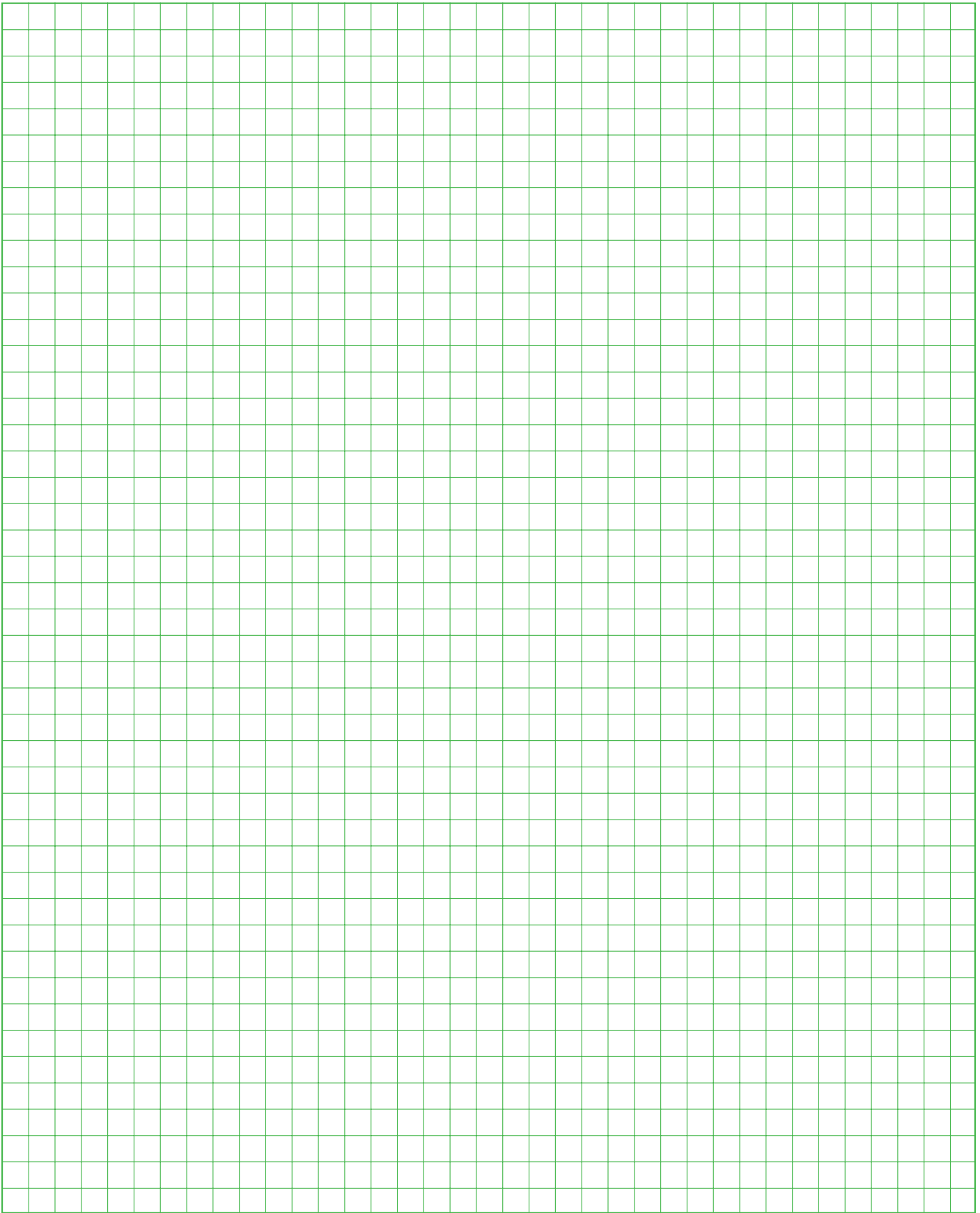
	<p>5.6 m Type 1608 SH head piece with SH/SHWS guying and T120 boom head</p> <p>Weight (incl. roller block) 2,180/2,490 kg Width 1,700 mm</p>
	<p>5.6 m Type 1608 boom section incl. 5.6 m Type 1370 LH with SH/SHWS guying</p> <p>Weight 1,390/1,520 kg</p>
	<p>5.6 m Type 1608 LH boom section with guying</p> <p>Weight 520 kg</p>
	<p>11.2 m Type 1370 LH boom section with guying</p> <p>Weight 970 kg</p>
	<p>5.6 m Type 1370 LH head piece with guying and T50 boom head</p> <p>Weight (incl. roller block) 1,210 kg Width 1,420 mm</p>
	<p>7 m Type 1370 WS lower boom section with 2 guying yokes</p> <p>Weight 3,750 kg Width 1,750 mm</p>
	<p>7.5 m Type 870 FS lower boom section with guying yoke</p> <p>Weight 1,100 kg Width 1,290 mm</p>
	<p>5.6 m Type 870 FS boom section with ropes</p> <p>Weight 410 kg</p>
	<p>5.6 m Type 870 FS head piece with ropes</p> <p>Weight 620 kg Width 880 mm</p>
	<p>S24.1 auxiliary jib</p> <p>Weight 510 kg Safe working load 24 t</p>
	<p>S12.1 auxiliary jib</p> <p>Weight 370 kg Safe working load 12 t</p>

3300E Transport dimensions

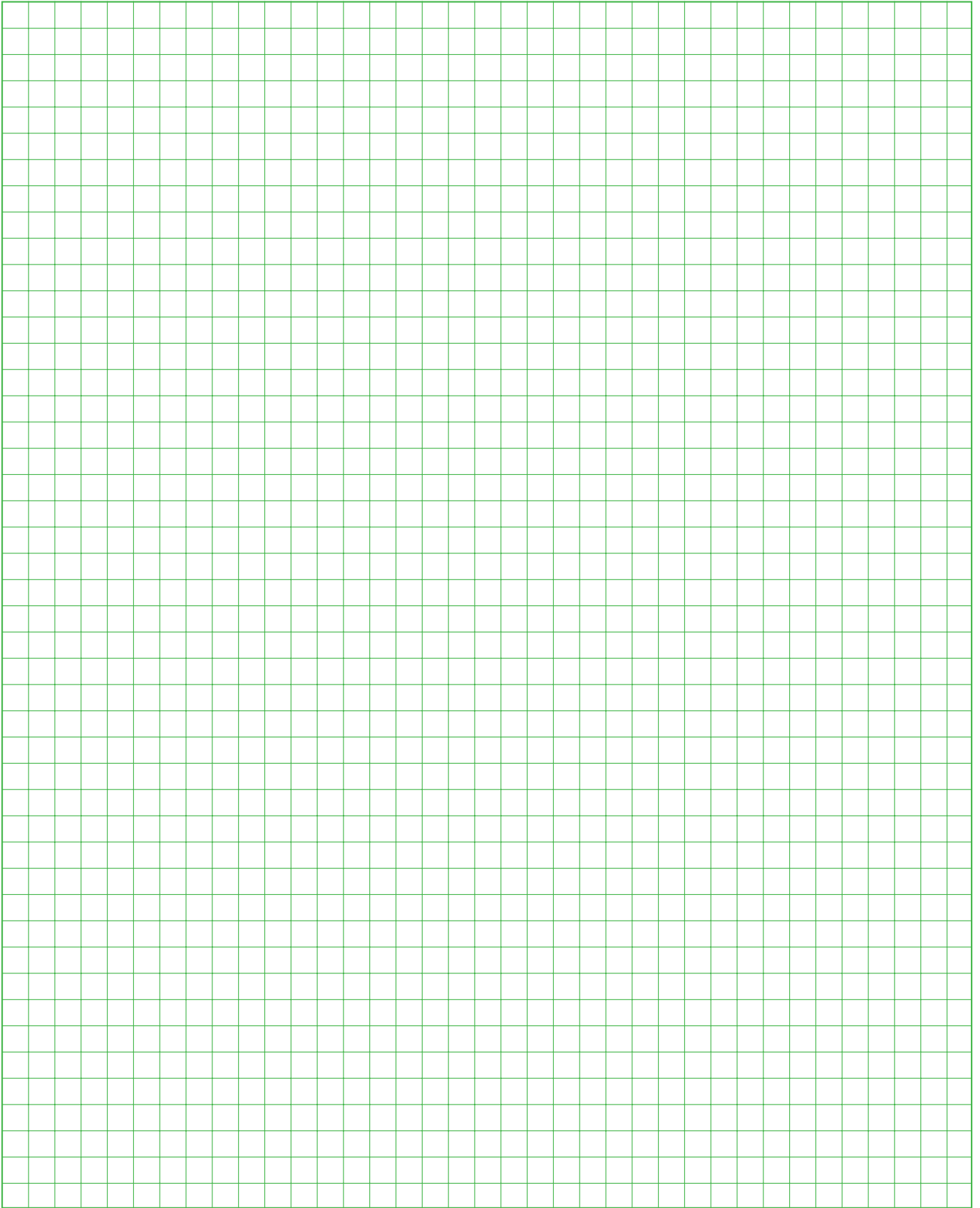


3300E basic machine, no lower boom section, 360° railing*

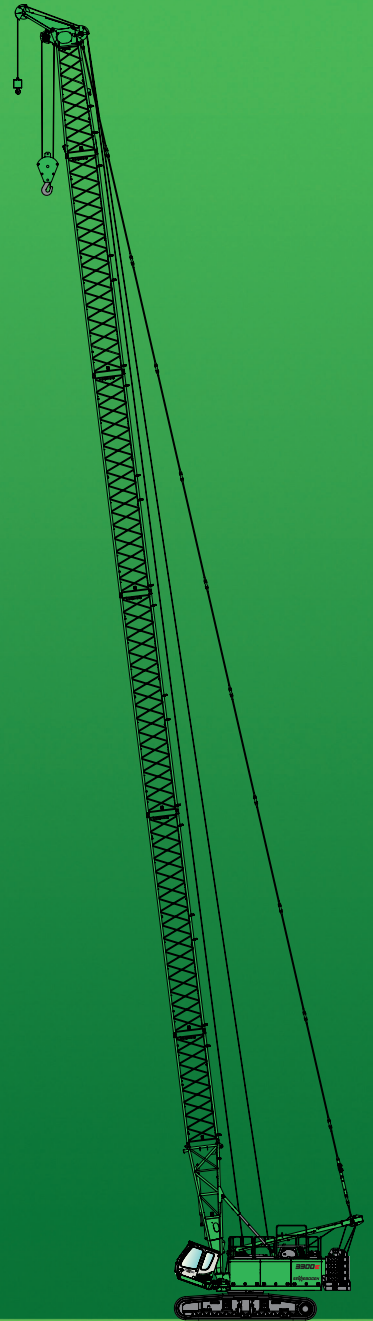
3300E Notes



3300E Notes



3300E



This catalog describes machine models, scopes of equipment of individual models, and configuration options (standard equipment and optional equipment) of the machines delivered by SENNEBOGEN Maschinenfabrik. Machine illustrations can contain optional equipment and supplemental equipment. Actual equipment may vary depending on the country to which the machines are delivered, especially in regard to standard and optional equipment.

All product designations used may be trademarks of SENNEBOGEN Maschinenfabrik GmbH or other supplying companies, and any use by third parties for their own purposes may violate the rights of the owners.

Please contact your local SENNEBOGEN sales partner for information concerning the equipment variants offered. Requested performance characteristics are only binding if they are expressly stipulated upon conclusion of the contract. Delivery options and technical features are subject to change. Errors and omissions excepted. Equipment is subject to change, and rights of advancement are reserved.

© SENNEBOGEN Maschinenfabrik GmbH, Straubing/Germany. Reproduction in whole or in part only with written consent of SENNEBOGEN Maschinenfabrik GmbH, Straubing, Germany.

SENNEBOGEN
Maschinenfabrik GmbH

Sennebogenstraße 10
94315 Straubing, Germany

Tel. +49 9421 540-144/146
Fax +49 9421 43 882
marketing@sennebogen.de

Order no. / Item no. 195309
3300-E-041615

GO FOR GREEN

www.sennebogen.com